

the Belleville times/news

Vol. 70, No. 8

Copyright Frank A. Orechio, 1979

Thursday, February 1, 1979

246 Washington Ave., Belleville, N.J. 07109

759-3200

Second class postage paid at Newark, N.J.

25¢



Disco Hearing — Commissioners listen to testimony of Florence DeAngelis, a Harrison Avenue neighbor of Parrillo's disco Tuesday night. Town Attorney John Scott (left) served as prosecutor with Mayor Michael Marotti presiding. Commissioners decided to suspend disco's liquor license six months but that decision is being appealed to the state ABC. Meanwhile the dancing continues at the Belleville discoteque.

BOUNCERS CHARGED WITH ASSAULTS

Disco appealing new 180-day shut down

Parrillo's Disco was found guilty of four charges centering around security guards' allegedly assaulting customers. The disco was ordered closed 180 days early yesterday morning by three Belleville commissioners acting as the town's liquor control board.

Attorneys for the Harrison Avenue business, however, said said appeals would be filed in time to enable the disco to continue operations without interruption tonight pending a final decision expected in the weeks ahead from N. J. Alcoholic Beverage Control Director Joseph Lerner.

The discoteque had been ordered to close last month for 120 days and Parrillo's is appealing that decision as well. In the meantime, law permits operations to continue at the disco. The ultimate authority is Lerner himself who will review the Belleville transcripts along with subsequent hearings conducted by the State ABC Board.

Three weeks ago, Public Safety

Director Rocco Saletta revealed that new charges against Parrillo's were being pressed, even before the State ABC ruled on the first set of violations and the legality of the 120-day penalty imposed locally.

During a five-hour hearing that began at 7:30 p.m. Tuesday, Belleville Town Attorney John Scott called a parade of 18 witnesses who painted a picture of security guards' assaulting customers and in one instance, hitting a Harrison Avenue 17-year-old youth who was trying to navigate the family car out of the Parrillo's parking lot.

Most of Tuesday night's testimony, however, centered around a 19-year-old Hillside man, Vincent Rispoli, who told Belleville commissioners that the disco's hired bouncers held him and beat him with a nightstick.

Rispoli said he was dragged from Parrillo's, pressed against a car in the parking lot and hit some more. He was subsequently treated for lacerations and a minor concussion at

Clara Maass Memorial Hospital.

The version of the incident from the bouncers was somewhat different. They said Rispoli was drunk and even kicked one of the guards in the groin.

Attorney Scott was annoyed because Thomas Kramer, the bouncer charged with the assault, was not at this week's hearing.

However Kramer, acting on the advice of counsel, stayed away from the session last Belleville Town Hall Tuesday night because he is facing Please see PARRILLO'S on page 3.

HEARING NEXT WEEK

Pathmark plan includes Belleville movie theater

By Donna Abate

The Pathmark shopping complex plan with eight satellite stores and a movie theater will be the subject of a site plan hearing before the Belleville Planning Board a week from tonight at Town Hall.

Pathmark hopes to build the mall on the property which houses the now vacant Westinghouse plant on Washington Avenue just south of the Nutley boundary. Shopping Center Developers, Ltd., under president Harold Lerner, filed the site plan locally in November but various delays such as a town engineer halted action.

The Belleville Board of Commissioners last week hired Neil Siciliano as a part-time consulting engineer. That action was followed by planners' scheduling the Feb. 8 hearing.

Siciliano, an engineer from Woodridge, will attend next Thursday's meeting, but his exact role in participating in decisions or offering suggestions has not been decided.

The Pathmark application shows a site plan with eight satellite stores on the easterly side of Washington Avenue opposite MacDonald's and the Olympic Bowl bowling alleys.

The proposed site covers a total of 71,810 square feet and will include Please see PATHMARK on page 5.

Belleville bus runs being cut Monday

Belleville's present schedule of 43 bus runs to New York via the Jersey City rapid transit terminal will be cut to eight runs starting next Monday. All Saturday service on the DeCamp Route 22 is also being eliminated on the route which runs from Caldwell, Verona, Montclair, Bloomfield, Belleville to North Arlington and Jersey City.

Westbound service from Belleville to Bloomfield and Caldwell is being reduced to nine runs limited to a Monday-Friday timetable.

Belleville Commissioners received the revised schedule from Robert B. DeCamp, president of the Clifton bus firm, in early January. No word or resolution of protest has been voiced by local officials.

Earlier bus hearings here heard from several commuters who protested the then complete elimination of service on the 22 line which also serves the Jersey City area colleges and is a quick route to Manhattan locations served by Path rapid transit trains including the World Trade Center terminal in the financial district.

At present, the last eastbound bus departs Belleville at 11:34 but service will be cutback to a final departure of 5:07 p.m. starting Monday.

Commuters from the Path terminal at night must board the 6:15

p.m. bus for Belleville or seek alternate means of transportation. The present schedule has evening service leaving for Belleville at 6:56, 7:56, 8:54, 9:54, 10:54 and 11:54 p.m. — all of which will be terminated as of Monday.

The route, presently operates on

Saturdays but not on Sundays. After this week, there will be no Saturday service either.

Town Clerk Eugene Barnett's records indicate notice of the bus service cutbacks was given commissioners here on January 10.

Building inspector quits in Belleville

Simon Lieberman, Belleville's building inspector and code enforcement officer since 1974, resigned by telephone Monday.

Lieberman had been on vacation the past two weeks and rumors have been circulating he was trying out another position closer to his home at the Jersey Shore.

"He called in and said he was taking another position," Public Works Commissioner Mary V. Senatore confirmed yesterday.

Although Lieberman personally has not been politically controversial, his appointment by Belleville Commissioners in 1974 has been challenged through the courts and hearing rooms of New Jersey Civil Service.

Bernard O'Connor, a part-time health inspector here, had passed and finished first on the last Civil Service test for building inspector.

However New Jersey enacted a new land use law which went into effect since Lieberman's appointment. The new law required towns to name code enforcement officers who were to be charged not only with inspecting buildings, but a wider scope involving such areas as plumbing,

electrical work and even accepting a certain amount of responsibility for fire prevention.

Senatore said O'Connor didn't meet the criteria for the newly defined position and she apparently has won her point. O'Connor might qualify as building inspector here, a post which legally could be created under the jurisdiction of Lieberman's office. But to accept such a job would have meant O'Connor would have suffered a cut in pay. The O'Connor-Senatore controversy seems to be dormant on a back shelf, but meanwhile the political battle took its toll on Lieberman.

His office became disrupted again in recent months when Senatore fired municipal engineer Fred Busch much of the engineer's work fell on Lieberman's office and Busch himself at one point pressed for an appeal, court hearings and letters of justification for his dismissal from Civil Service. That dispute also seems to be dormant at the moment.

But the recent preparation of a new zoning ordinance without the services of an engineer was demanding on Senatore's Public Please see LIEBERMAN on page 3.

Dr. John Greed: complicated ideas prevent simpler life as superintendent

By Mike Olohan

"I try to do the ordinary extraordinarily well." That's his favorite quote, a maxim he lives by. He "picks" the banjo, enjoys model trains, plays golf occasionally and likes to waterski. His favorite television program is "The Andy Griffith Show" because "he led a simple, uncomplicated life and I aspire to that."

He keeps a low profile in what he calls "a real pressure cooker" of a job. At times he relaxes by sitting in his brown-paneled office, away from his desk which is covered by papers and books. His position and the decisions he makes are powerful and often enveloped by controversy.

Who is this person? His name is Dr. John Greed, Belleville's superintendent of schools. "You have to almost force yourself to get out of the office. I seem to be getting inundated with

more and more paper all the time," he says pleadingly. Greed was appointed by the board Aug. 1, 1976. About 10 hours after the interview for this article Greed received an overwhelming "vote of confidence" from five trustees who extended his contract through June, 1980. Greed will receive mandated tenure, although he's personally against administrative tenure, Aug. 2 — which is three years and a day since he took over.

"We have a relatively stable school system in Belleville, the teachers, secretaries, custodians, maintenance men and staff members as a whole do a good job," he said, noting Belleville's 11 school principals have been unusually cooperative with the administration. "I think it's my responsibility to keep a vigilance over the school system," stressed Greed, pausing to ponder a question, which he did several times during a two-hour

interview on his Belleville experiences and career.

HE TALKED OPENLY yet cautiously about several volatile school issues. He said Belleville schools do not offer a thorough sex education program "because that belongs in the home." Greed said since 1964 he has been periodically speaking out for comprehensive sex education programs in public schools but was discouraged by public opposition.

"You can't divorce sex education from morality, therefore I've cooled to extensive sex education programs," said Greed. Because he is Catholic, Greed says he'd find it "very hard to teach both sides" of sexual issues like contraception and abortion. He said statistics show "almost 86 percent" of children today get information about sex from their peers.

"We as parents have to play our role in saying sex was made by

God and should be saved until after marriage," he said, adding many high schoolers "feel more relaxed talking to their counselor about sexual needs and problems than their parents." The high school has three counselors for 1,800 students.

"We as educators should try to get more parents to be understanding about the importance of early sex education. There is so much 'exploitation' in the media, magazines and movies there's just too much of it. There needs to be a more comprehensive effort from our homes and churches so we understand human sexuality," said Greed.

Greed said he was worried about how Belleville citizens might react to his views on sex education but did not ask to withdraw them, opposing any censorship.

When asked about the Equal Rights Amendment, Greed said Please see DR. GREED on page 4.

Dailey, Tvedt re-elected to head 1st DeWitt team

Seven senior officers, three directors and three junior officers, have been elected or re-elected at First



John Dailey

DeWitt Savings and Loan Association. The elections took place at the recent annual meeting of the DeWitt board of directors.

The board re-elected John P. Dailey chairman and Henrik Tvedt president. Also re-elected as senior officers were Robert K. Hicock and John H. Isomann, vice presidents, and Rhoda Snow, secretary. Mary Bowen, formerly treasurer, was elected assistant vice president, and Robert A. Lewis, formerly controller, was elected treasurer.

Directors re-elected were Herman W. Leitzow, Clarence P. Lommerin, John L. Plansoen and Michael J. Quigley.

Junior officers elected included Robert Blum, assistant treasurer; Marie E. Massa, assistant secretary; and Colleen Salmon, assistant secretary.

At the conclusion of the meeting, Dailey and Tvedt reported to the board that the association had experienced a healthy growth during

1978 in all aspects of operation. Comparative figures showed that the association had reached an asset level in excess of \$168 million. Savings increased to over \$151 million, and first mortgage loans were up over \$10 million to over \$149 million.

During 1978, First DeWitt paid out \$9,437,143 in dividends, the two officers stated, an all-time record for the 12-month period.

Looking ahead to 1979, Dailey and Tvedt predicted a good year and expressed the hope that the tight supply of mortgage funds would be relieved shortly through state and federal actions.

The officers noted that the association was entering 1979 in a strong financial position. After interest payments to savers, operating expenses and taxes, Tvedt noted that the association added \$844,488 to reserves in 1978, and the reserves and undivided profits now total \$9,661,601.



Henrik Tvedt

Lincoln Turner named to arts school board

Lincoln Turner, Essex County freeholder and marketing manager for the Penick Corporation, Lyndhurst, has been appointed to the board of patrons of the New School for the Arts, a professional, non-profit community based school for dance, music and drama at the Montclair North Essex YWCA, Montclair.

Elected to the Essex County Board of Freeholders in November, Turner was born and raised in Bucks County, Pa. He won athletic academic and senatorial scholarships to Lincoln University, where he received his bachelor of science degree in biology/chemistry. He has done graduate work in marketing at Rutgers Graduate School, Newark.

Choose your tax forms carefully, advises Block

"The income tax form you receive in the mail is not always the best form to use for your financial situation," H&R Block District Manager Bert Tobia cautions. He explains that his company is convinced that many taxpayers throughout the nation simply don't realize that they might be able to legitimately save money by filing a different form than they received in the mail.

In passing along this tip to taxpayers who prepare their own returns, Tobia explained, "For example, persons who can take advantage of the new residential energy tax credit must use the long form. The long form should also be used to claim child care credits, credits for the elderly, investment credits, contributions to candidates for public office credits, new jobs credits and foreign tax credits. By taking advantage of these tax credits, taxpayers could save money on the taxes they owe."

Persons with questions on which form to file may visit the H&R Block office at 187 Franklin Ave. or call 235-1000.

State office to hear citizens' cable complaints tomorrow

The Board of Public Utilities, Office of Cable Television, will meet at the Paramus Borough Municipal Building 8 p.m. tomorrow to hear citizen complaints and comments concerning cable TV service offered by U.A.-Columbia Cablevision of New Jersey and Cablevision of New Jersey.

It will be the eighth in a series of public hearings conducted by the office in areas close to the residents of each of New Jersey's 45 cable companies.

"These hearings have provided a forum for the state's cable subscribers to voice their concerns directly to representatives of the state regulatory body for cable television," said office Director John Cleary. "The hearings have also provided a valuable feedback for us," continued Cleary. "Cable growth in New Jersey is growing at twice the national rate, and it is important for us to travel to listen and exchange ideas with people who are

affected by this growth."

There are 425,000 cable television households in New Jersey. At the present growth rate, the office predicts this number will increase to a half million by 1980 and 800,000 by 1982. U.A.-Columbia Cablevision services 41,731 households in 34 municipalities in Essex, Bergen, Passaic and Morris Counties. Cablevision of New Jersey services 7,317 households in eight municipalities in Bergen County.

Tomorrow's hearing will be attended by members of the office's administrative, legal and systems operations staff. All complaints and comments will be recorded and investigated by office staff members.

The Paramus Borough Municipal Building is located on Jockish Square in Paramus. Any questions concerning the hearing may be directed to Dominic Picardi, supervisor, systems operations of the Office of Cable Television in Newark at 648-2670.



Clowning For Crippled — Four clowns of the Salaam Temple of the Shriners, recently provided entertainment at a local Christmas party hosted by the Crippled Children's Committee of the North Central District of the Elks. The clowns presented each child with gifts for Christmas.

HEARING AID CENTER
Office Hours by Appointment
CALL 342-6464
Hearing Equipment Center of NJ

Over 20 Years Experience

HEARING AIDS
SALES & REPAIRS
All types of hearing aids
REPAIRS SERVICE & BATTERIES
FOR ALL MAKES

Professional Service
No Hidden Fees

INCOME TAX TIPS

by ROBERT CARUSO C.P.A.
You still have time to either make a contribution to an Individual Retirement Account (IRA) or establish an IRA and receive a deduction on your 1978 tax return. The same is true for a retirement plan contribution, if you are self-employed. The contribution must be made no later than the due date of your return (including extensions) which for most individuals is April 16, 1979.

The contribution for an IRA deduction is limited to the lesser of \$1,500 or 15% of your compensation. A self-employed individual's contribution is limited to the lesser of \$7,500 or 15% of earned income. You receive the deduction for the IRA contribution even if you do not itemize. There are other benefits and restrictions; for complete details of each plan you should refer to IRS publication number 590 or 599 or consult your tax advisor.

Each week I will be discussing new tax legislation and other tax matters that I believe will be helpful in the preparation of your 1978 tax return. You should realize that these short comments are only a summary of the tax law. They may not be all inclusive. Refer to the publications I mention for complete details or call me directly. I offer complete tax and accounting services. My office is conveniently located at 600 Belleville Ave. in Belleville. For further information or an appointment call 759-4949.

"The simpler your return, the less we charge."

If you qualify for the Short Form, we charge a very low price. But even if you need the Long Form, the simpler the return, the less we charge. That's another reason why you should let H&R Block do your taxes.

H&R BLOCK
THE INCOME TAX PEOPLE

NUTLEY
187 Franklin Ave.
235-1000
Open 9 AM-9 PM Weekdays, 9-5 Sat. & Sun. Phone 531-5585
APPOINTMENTS AVAILABLE

BELLEVILLE
143 Washington Ave.
751-3836

First DeWitt Savings AND LOAN ASSOCIATION

BELLEVILLE • BLOOMFIELD • HOPATCONG

MAIN OFFICE: 463 Washington Ave., Belleville
BLOOMFIELD CENTER OFFICE: 667 Bloomfield Ave., Bloomfield
WATKINSVILLE OFFICE: 20 Watkings Ave., Bloomfield
BROOKDALE OFFICE: Broad St. & Watchung Ave., Bloomfield
FOREST HILL OFFICE: 60 Belleville Ave., Bloomfield
HOPATCONG OFFICE: Sharp Ave. & Hopatcong Rd.

IN BELLEVILLE CALL 751-2800 • IN BLOOMFIELD 743-6300 (ALL OFFICES) • IN HOPATCONG 398-0900

You couldn't do business with friendlier people

ASK RITA

Dear Rita,
My teenage daughter is on the phone every night. This annoys me, because it makes it difficult for the rest of us to make or receive calls. She spends more time on the phone than she does with her family or doing homework. It's driving her father and I crazy! What can I do?

Mother of a mouth.

Dear Mother,

For some unknown reason, young people develop a talking addiction when they reach puberty. The phone is too great a temptation to these young addicts. It is the cause of much arguments and family blow-ups. It is important to treat this problem early by setting up rules in its early stages or else it can grow out of hand. I've heard of these teenagers, who carry on conversations on two separate phones at one time!

Children must be taught consideration of other members in the household. Why not assist them by setting up reasonable rules and limits which the whole family could follow. By doing this you could teach them by your example, also. An example of a rule might be 15 or 20 minutes for each call and a limit of 2 or 3 calls a night depending on the needs of the rest of the family.

If its schoolwork that you're worried about, you may want to compromise. You could insist on equal time on the phone as spent on homework each night. If her schoolwork is up to par and you don't mind the use of the phone so much, you may want to give her a phone of her own. I would suggest certain restrictions right from the start or else you may never see your child again. There are definitely solutions, so before you blow up — talk it out. If she's too busy, give her a call — I think she'll get the message!

Rita

Parrillo's 'guilty' again

Continued from page one.
possible indictment based on criminal charges related to the same incident.

Kramer, is also the bouncer charged with hitting the 17-year-old driver from the neighborhood. That assault on young James DeAngelis, 92 Harrison Ave., allegedly was witnessed by DeAngelis' mother, Florence, and a neighbor, Mrs. Ruth Williamson.

Mayor Michael Marotti presided at Tuesday's hearing which recessed for a verdict shortly after midnight. Marotti, Strumolo and Public Affairs Commissioner emerged from their deliberations shortly before 1 a.m. to announce their guilty verdict and 180-day closing penalty.

The four charges forming the basis of the hearing here this week were: (1) permitting fights and brawls without proper supervision and safeguards, (2) permitting patrons to loiter around sidewalks and the parking lot, (3) failure to maintain adequate crowd control, and (4) contributing to a public nuisance and disturbing the neighborhood.

Attorney Allen Marra represented Parrillo's and its owner, Anthony Fierro. Fierro also testified Tuesday and said he was forced to hire a Newark security force when Belleville police declined to work with the establishment. Marra also said the discotheque has never exceeded its rated capacity of 400 persons.

Parrillo's going on national TV

"Discoworld" Magazine, a New York publication, will host a celebrity party at Parrillo's Disco, 104 Harrison St., at 9:30 p.m. Sunday, Feb. 18, which will be videotaped for national distribution.

The party will feature "Mantus," a popular disco group, who will sing their number one hit song "Dance it Freestyle."

Producer, writer, arranger and singer Van McCoy, originator of the famous "Hustle," will also head the evening's program with his performance of his new hit "Lonely Dancer."

Betty Everett, star of "Bubbling Brown Sugar," will highlight the party with her song "Doing The Best That I Can." And New Jersey's Benny Troy will perform "Tearing Me To Pieces."

The party will also feature the number one rated disc jockey of WKTU-FM who will emcee the Belleville event.

"Discoworld" plans to include a fashion show with Denise Palamara of Bloomfield and Eugene Pizarro of Newark as models.

The magazine, which is celebrating its second anniversary, will also choose a "Discoworld" person of the night who will win a windjammer cruise to the Caribbean.

The celebration at Parrillo's is the 12th in a series of parties scheduled by the publication throughout the United States and Canada.



Tri-Town Quad — Members of the Tri-Town Business and Professional Women's Club of Nutley, Belleville and Bloomfield welcome new Nutley member Mrs. Helen Lane Longo at the regular meeting last Thursday at the Chandelier Restaurant. Pictured are (l-r) Ruth Williamson of Belleville, membership chairman; Mrs. Longo, Pat Diana of Belleville, publicity director, and Caroline Theisz, club president of Bloomfield.

Lieberman resigns post as building code official

Continued from page one.

Works Department staff where Lieberman has been a leader.

Two weeks ago, Belleville Commissioners hired Neil Siciliano as a part-time consulting engineer. Siciliano had been helping Belleville with projects involving federal funds, but his fees have always been paid by those applicable grants.

The Planning Board probably is most responsible for the hiring of at least a consulting engineer. Planners thought the lack of an engineer was so serious a failing in reviewing site plans — such as Pathmark's which is up for review next Thursday — that the board adopted a formal resolution asking Mayor Michael Marotti to immediately engage an engineer.

Commissioner Senatore last week had told the Times/News that Lieberman had taken a vacation "to

think things over." Others close to that office suggested Lieberman didn't like the Belleville politics, and was seeking a position closer to his home community at the Jersey Shore.

Now lacking both a full-time engineer and building official, Belleville has asked and obtained

Nutley's cooperation. Nutley Code Enforcement Officer Pat Intindola is handling emergencies here, Commissioner Senatore notes. Nutley Public Works Commissioner John H. Lucy said that town's board had authorized Intindola "to help Belleville" as a service of "neighborly goodwill."

TESTIMONIAL DINNER

In Honor of

LAWRENCE S. SCHWARTZ

Friday Evening, February 16th, 1979

at 7 P.M.

NANINAS "The Park"

Belleville, New Jersey

\$20.00 Per Person

THANK YOU
SOLD OUT

Maximize your individual retirement income at First National State.

8.00% Interest Compounded Daily. 8.45% Effective Annual Yield.*

First National State IRA Plan Accounts earn the highest rates allowed by law.

If you have no pension plan where you work, First National State has a way to plan for your retirement and earn a maximum rate on your retirement savings dollars.

People who work for companies without a pension plan can open a tax-deductible First National State Individual Retirement Account (IRA).

Money deposited in an individual retirement account (IRA) may earn 8% interest

or 8.45% Effective Annual Yield, which is the highest rate allowed by law. ** You may deposit into your established IRA Plan or open a new one until April 16, 1979, plus any extensions, and this will give you a break on your 1978 Federal income taxes.

To get the complete story on how to take advantage of this tax saving, money-earning retirement plan, write or call your local branch manager. But do it today.

*Yield applies to deposit of \$1,500.

**Substantial penalties may be required for early withdrawal as required by Federal Regulations.



A great bank can make a great difference.

Serving you locally at 350 Centre Street, 575 Kingsland Avenue,

356 Franklin Avenue and 495 Franklin Avenue

First National State Bank of New Jersey 550 Broad Street, Newark, New Jersey 07102. (201) 565-3153. Member First National State Bancorporation. Member FDIC.

FINAL WEEK

Help us with this yearly inventory chore by taking advantage of the Many Exceptional Quality Home Furnishings Values Especially Reduced in Price for prompt clearance and delivery.

Included in Our Annual Sale you will find:

LIVINGROOMS • BEDROOMS • DININGROOMS • PLAYROOM FURNITURE

Plus

BEDDING • CONVERTIBLE SOFAS • RECLINERS • ROCKERS • TABLES • LAMPS • ACCESSORIES • AND MORE

Make A Date...and Don't Be Late...the Kastner "Klan" is looking forward to seeing you soon.

Free Full In Home Service And Delivery.

Free Removal Of Your "Retired" Bedding.

Attention Nutley Residents... Play Wednesday Night Home WEEKLY BINGO on WJ-COLUMBIA CABLE 3 With Host John Kerr. There Are Always Winners and you could be one of them.

Pick Up Your FREE BINGO CARDS AT KASTNER'S

No Purchase Necessary

Remember... Whether It Be BINGO or Home Furnishings, You're Always A Winner At Kastner's

Kastner's Furniture

"3 GENERATIONS FURNISHING FINE HOMES FOR OVER 50 YEARS"

492 FRANKLIN AVE. 667-1384 NUTLEY

FREE PARKING

VISA-BANK AMERICAN CARD & MASTER CHARGE

THE KING OF PRICES

Hot & Cold Catering

BILL-TONE'S

95 Harrison Street, Nutley 667-4877

ONE WEEK ONLY

Doesn't Have To Be Expensive To Be Good We Slice To Your Order

Store Hours: 7:00 A.M. to 9:00 P.M.

KRAFT CASINO SWISS CHEESE \$2 ¹⁹ lb.	HOME MADE ITALIAN SAUSAGE Hot or Sweet \$1 ⁹⁹ lb.
HOME MADE BAKED VIRGINIA HAM \$2 ⁸⁹ lb.	MRS. SMITH'S PIES \$2 ¹⁵ & up Serves 8-10
THUMANN'S OVAL SPICED HAM \$1 ⁹⁹ lb.	POTATO MACARONI SALAD & COLE SLAW 59¢ lb.

Pharmacy Footnotes

Fungi are spore forming plants that include mushrooms, puffballs, yeasts, blights, smuts, rusts, rots, and molds. Fungi are in many ways harmful to man but they do have a useful side as well. On the positive side, of course, is the fungus Penicillium, the genus of molds from which the drug penicillin is extracted. Molds and their relatives constitute the greatest source of present day antibiotics. In the future, fungi may be more helpful than destructive to man as their activities are better controlled.

You'll find our staff at ROS-SMORE PHARMACY, 338 Washington Ave., 759-1968, 759-1956 very helpful. When you have a prescription bring it to us. Contraceptive aids including the sale and rental of wheel chairs, crutches and canes are handled, and a full line of Russell Stover candies and all types of greeting cards are available for Valentine's Day. Open: 9am-10pm daily, 9am-9pm Sundays.

HELPFUL HINT:

Remove acid quickly from the skin by drenching with water; then apply a solution of two teaspoons of bicarbonate of soda in a full glass.

opinion

Nelson Rockefeller

Nelson Rockefeller, one of America's great benefactors, died last week, and out of the woodwork came the hypocrites. Indeed, Rockefeller devoted his entire life, dedicated to the proposition that man is entitled to retain his dignity and have the opportunity to achieve his life goals in the world's leading democracy.

Rockefeller was under no obligation to make a total commitment to serving his fellow man in order that future generations of Americans be given the opportunity to improve the quality of life. But he did.

Rockefeller was a good man. He had unlimited energy and total dedication to his country. We knew him personally. We were very much impressed with his personal warmth and


sincerity of purpose. Despite his great wealth, he never lost the common touch. For us, Rockefeller was one of a kind — and that is too bad — America could use a couple of more Rockefellers — we are so sadly in need of national leaders with unselfish motives.

We mourn the death of Rockefeller, but we comfort ourselves in the knowledge that Nelson Rockefeller memorials abound throughout this great nation of ours, in the shape and form of humble people who are aided by Rockefeller's generosity, thoughtfulness and compassion.

Frank A. Orechio

the Belleville

times/news



Published every Thursday
at 246 Washington Avenue,
Belleville, New Jersey, 07109
Telephone: (201) 759-3200

Publisher
FRANK A. ORECHIO

Social Editor
HELEN MAGUIRE

LETTERS

Who owns Parillo's! there is confusion

To the Editor:

On Tuesday, January 23, 1979, the then sitting Belleville Board of Commissioners unanimously indicated their approval to shut down Parillo's Disco when pressed by deeply concerned and irate citizenry who insisted enforcement of a recently enacted ordinance which would permanently ban all disco establishments within town.

However, to the chagrin of the citizens, an opinion by town attorney Scott that the Commissioners would not have the benefit of the law because the ordinance could not be applied retroactively, caused the already phlegmatic Commissioners to equivocate on their decision because they didn't wish to be sued. As a result, nothing happened and Parillo's was opened again for business on January 24, 1979 and is currently open as of this writing. The Commission's lack of action and their reversal in decision in light of all they know is execrable and intolerable.

The Commissioners are elected by the people and are to represent those people when carrying out the functions of government. They are empowered to form policies and programs and to enact laws to maintain the general health, welfare and safety of the community. The following, not withstanding their exactitude, enumerate some of the probable causes which in my opinion are more than sufficient to motivate the Commissioners to press vigorously through their own effort or through assistance from the county or state to abate the general festering conditions in that residential area — conditions which are without doubt the by-product of that now "headline" disco.

1. Liquor violations which closed Parillo's for 120 days. It is currently on appeal.

2. A now conforming restaurant-cocktail lounge transformed into a flashy sparkling disco dance hall exclusively designed for dancing where admission is charged. A total complexion change for its previous use.

3. Lack of specificity or dubious status of parties involved in ownership, management, etc. of Parillo's. Liquor licenses are specific and require full disclosure of all persons involved with said license. Any changes, additions or sales etc. in the licensed premises or the

license itself must be made public. Various names have emerged out of the mire of Parillo's. Certain names are indicated on violation orders issued out of the Construction Code Agency of Belleville and still a different name appears on notices to Parillo's for liquor statute violations issued by town attorney Scott. Who is the liquor licensee of Parillo's? Why are different names mentioned on different documents as stated? Are there unmentioned licensees in control or management of Parillo's in violation of state liquor laws?

4. Violations on occupant capacity. These violations are sporadic, but constant. Why weren't charges for each violation brought instead of just warnings?

5. Violations in Construction Code and Electric Code which are dubious as to their correction as of this date. A definite fire hazard which could endanger the lives of people and property surrounding the disco.

6. Public Nuisance — fights, speeding, patrons/noisy, drunk and trespassing on property regularly.

7. Alleged violations in serving minors. Citizens in the area, from personal knowledge, know minors are entering Parillo's.

8. Armed personnel are hired to keep order. While the personnel may be properly licensed, the mere fact armed security is present is prima facie that problems exist. Do all other liquor establishments in town have armed security?

9. Noise ordinance violations — sounds emitted from Parillo's penetrates into many of the homes in the area.

There is no hesitation in my mind that the aforementioned give the Commissioners abundant and emergent cause to actively pursue an investigation into this Parillo matter and to affect laws of the health, welfare and safety of community. It has become apparent that no one on the commission will take affirmative action. The lack of concern will jeopardize the area and will result in Parillo's maintaining its current status. The only remaining hope lies in the Alcoholic Beverage Commission doing what should have been done some time ago.

Respectfully,
Joseph R. Yeamans
Tappan Avenue

Golden Comments

By James R. Golden



It is inspiring to observe that the Belleville Chamber of Commerce is now in the process of revitalization with the infusion of many prominent businessmen actively involved in the banking, manufacturing, utility, printing, newspaper publishing and most all other aspects of our town's business life.

This move has long been overdue and much needed in view of the lagging business activity in our once busy shopping areas. The installation of Henrik Tvedt as new president and Gerald F. Zender as vice-president is indicative of the concern of the banking element of our community in the creeping decadence seeping into our high rateable area. Mr. Tvedt is president of First DeWitt Savings & Loan Ass'n. and Mr. Zender is vice-president of Fidelity Union Trust Co. They are joined by Mr. Thomas Aiken of Peoples Bank.

Encouraging, too, is the renewed influx of prominent executives of many local industries which bodes well for the likelihood of their formulating innovating ideas and plans to galvanize our somnolent business activity to a new vibrant growth and attractiveness.

There can be little doubt but that Belleville, under the proper leadership and guidance, can be restored to its once favorable status as a prosperous business and manufacturing community as well as a moderately affluent residential suburban town.

We sincerely wish abounding success and achievement to the regenerated local Chamber of Commerce and exude confidence that under the capable competence of its newly activated members that their dedicated aspirations to reverse the deteriorative trend will be achieved.

We are always emboldened when successful businessmen put their heads together in mapping out a projective proposal, since it so often succeeds; Whereas, politicians usually fail... Thanks a lot Belleville Chamber of Commerce. We needed that.

It would appear that the last town commission meeting was a night to remember. A large group of residents turned up to gripe about new zoning regulations affecting their properties, while irate citizens in the vicinity of Parillo's Disco clamored for its closing. Comm. McGreevy took ill and was obliged to leave the meeting as the capricious citizens wrangled with the commissioners until the wee hours of the morning.

Oratory, rhetoric and forensics pervaded the stodgy chambers as a perfunctory roll-call vote of the commissioners on hand was taken by a spokesman of the objectors of the disco operation. All commissioners pledged their desire and indicated their will to ban the affected disco's continuance. The bewitching hour of midnight came and past as the tired and weary participants on both sides of the rail took off for home...satisfied? No, not really, the disco still functions despite the pledges of the commissioners to ban its operation, notwithstanding, that they are supposed to be the determining factor in whether it stays open or not.

The residents of the area are "burning up" trying to figure out just why the people elected to run the town, despite their public commitment to close the disco, never seem to get around to implementing their publicly recorded pledge to do so. In fact, they can't understand how the disco has been allowed to function from its inception, since, in their conviction, it constitutes a violation of a non-conforming use and hence should be considered as having been operating illegally from the start.

Patently, should this premise be factual, it is nonplusing to understand why this matter hasn't already been resolved. All of which, occasions our inquiring why the Fabian tactics? Surely, the adage "...justice delayed, is justice denied." Someone, it would seem, is "dragging their feet" somewhere along the line.

In the meantime, it would appear from current newspaper copies that a new curfewing star may be looming in the political firmament of Belleville in the person of Joseph Yeamans who took up the cudgels in behalf of the residents in the affected Parillo's area.

A SPECIAL INTERVIEW

Dr. John Greed speaks out on issues

Continued from page one.

He disliked one aspect about it — its association with the gay rights movement. "Homosexuality is a real sickness in society. I don't accept gayness and I would not accept a gay teacher...it has to impair them as teachers," he said spontaneously.

"If we had a teacher who was gay and people knew, it would create problems for all the teachers. I don't know what I or the board might have to do if a gay teacher went public. I just don't think society should be that permissive," he said. Greed repeated he was concerned about how his remarks would appear in print, anxious over any repercussions.

At that night's board meeting, Greed referred to this profile as bing like "Jimmy Carter's Playboy interview" and seemed nervous about its "slant." However, he said earlier, "The day newspapers are censored is the day we see an end to democracy. And I say that as a guy who has been hurt by the press before."

Greed says he has recently been attending "rap sessions" at schools trying to better understand the problems and needs of teachers and students. "We have to encourage a climate of constructive criticism. This is not a perfect administration. A lot of people who speak at board meetings know what they're talking about...it's just that it takes a lot of courage to examine criticism," he said.

He said sometimes teachers lose sight of their goal of educating children,

"led on by a few militant vocalists." He seem empathetic to teacher concerns noting "There is a tendency nationally and in Belleville to criticize teachers for union activities," but added, "at times, the New Jersey Education Association (teachers' union) devotes a lion's share of its activities to members."

Because of that, "I don't consider them a professional organization," he said. Greed said trying to effect change in schools "is a most difficult task because the school board requires much time and information before making decisions. Democracy is a slow system but I like its forms of checks and balances," he said.

Greed said discipline and motivation are concerns though not large problems in the school system. "Motivation is a problem in the elementary schools but it is even a bigger problem at the secondary level." He says a "breakdown of authority in society and the destruction of family life is causing this."

"A school is where students should develop good critical thinking habits. Critical thinking will free students from many kinds of personal prejudices," said Greed while conceding "we have been guilty of poorly teaching social studies."

"I think our schools try to do what they can to teach the value of democracy and the democratic system," he said.

"You've got to be philosophical and have a good sense of humor in a job like this," said Greed with a grin. "You wouldn't believe it but there's times when I'm sitting with the board that it's like deja vu, like I've done this before and I know what they're going to say."

He agreed that trustees spend too much time on what he called "administrivia. But you've got to remember there are seven board members and some take longer to make their points than others. I just try to work with who is on the board," he said. Adding he avoids getting involved in personality conflicts.

Greed says being an administrator keeps him away from his family, which includes Gladys, his wife, two daughters, Maria, 20 and Gladys, 16 and sons, John, 21, and Christopher, 19.

Sipping coffee as he spoke, Greed appeared calm answering questions. "I have great faith in people," he said, stressing he doesn't try to portray "any type of image."

Greed has a doctorate in community relations.

Greed says he tries to visit the schools at least three times a week. "Because of the size of the system, I haven't been able to meet as many teachers as I would like to," he said slowly, "but fostering leadership in principals is the key to school system's success and we've done that."

He said a state-mandated "thorough and efficient" education is a good concept "but it hasn't worked." Greed said a lack of monitoring by state and county agencies "has made 'T&E' into a travesty." He believes Educational Commissioner Fred Burke "has soft-pedaled the 'T&E' requirements."

Board members have noted Greed's impartiality is a vital personal trait in their two assessments of him so far. Greed said trustees feel the system "has direction and that's important to them."

Chastizing schools as "the only institution that doesn't have to show a product," Greed said I think accountability is overdue. We better learn to measure the progress of schools. At times, we (administrators and teachers) are at fault but we're not very good at admitting our own faults."

"I think the local press coverage is fair," says Greed, "and I think there are people who deny saying things simply because they regret what they have said," he added, declining to elaborate.

"I've been a superintendent for 10 years now and been averaging two and a half nights a week out for related school activities. Sometimes I feel like I've been at a meeting for the last 10 years and I'm not someone who enjoys eternal meetings as the board knows," he said smiling.

Knights' jubilee set for Saturday

Preparations are ready for this Saturday night's 75th anniversary celebration of Belleville Knights of Columbus Council 835. The diamond jubilee dinner-dance is scheduled for 8 p.m. at Gene Boyle's Restaurant, 777 Passaic Ave., Clifton.

Grand Knight Michael Batty reports the Belleville council was organized Jan. 31, 1904, on the present sight of Bamberger's in Newark, when 34 charter members, were inducted.

James J. Boylan served as the first grand knight of the Belleville

Pathmark plan up for hearing

Continued from page one.

a Pathmark "anchor" store, eight satellite stores all accessible through an interior mall and four separate parking spaces to accommodate 392 cars.

Parking will be accessible by five separate driveways and will include an underground parking area of 143 spaces: a main parking lot with 143 spaces; a southern lot with 83 spaces and a northerly lot for loading purposes only to accommodate eight vehicles.

The main parking lot is separated from the southerly parking area by a stretch of property owned by Public Service. This would pose an inconvenience to use since there is no cross-over for vehicular or pedestrian traffic. In an event that a shopper could not find parking space in the main lot or underground lot, the shopper would have to exit back onto Washington Avenue and cross the street twice in order to use the southern lot.

Joseph Barbieri, engineering surveyor and planner, stated that his client had been unsuccessful in obtaining the Public Service property or gaining access through it.

Barbieri, however, said that the southern parking lot will be used solely by employees which would eliminate a prolonged traffic problem.

Although the Planning Board expressed concern in knowing what satellite stores will be included in the proposed Pathmark mall, Shopping Center Developers, Ltd. notified the board that it was too early to determine what stores would lease the satellite store space.

Although the particular eight stores are not known, it is expected the mall might include a movie theater and some type of restaurant. The site plan for the proposed Pathmark mall falls under the jurisdiction of the old zoning ordinance which stipulates an industrial zone in the particular area on Washington Avenue.

Barbieri, of Barbieri, Playmurs Associates, Totowa, commented that the target date for the proposed Pathmark project "hinges on the municipality."

"There probably will not be a definite decision made at Thursday's meeting," Barbieri added. "But if we get approval sometime in March, the construction could be underway this summer."

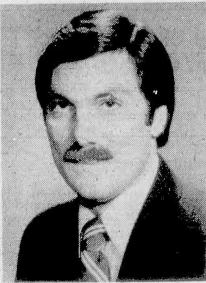
According to Barbieri, the mall could be completed for the holiday season of this year, provided there are no obstacles.

"I foresee no obstacles in the site plan," Barbieri said.

Although several attempts have been made, both the Shopping Developers, Ltd. and the architects were not available for comment.

council; he also was the founder of Peoples Trust Company. The first board of trustees included the Rev. James P. Smith, Joseph A. Conolly and Dr. John F. Condon. The first deputy grand knight was Dominick A. Walsh.

Present officers, include the Rev. James F. Heavey, chaplain; Louis Dalcero, chancellor; T. W. Sloan, recorder; Robert Nebeling, treasurer; John Burke, advocate, and William Donohue.



MICHAEL P. PIZZI

State inspector first to declare as town commission candidate

Michael P. Pizzi, lifelong Belleville resident, has announced his candidacy for the Board of Commissioners at the upcoming May 8 election.

Pizzi, who emphasized the need to curb inflation in his platform, is the first person to formally declare his candidacy for the Belleville election. The five incumbent commissioners are expected to seek new terms, however.

"Inflation in government must be curbed as a first order of business," Pizzi said in a brief news release delivered to this newspaper.

"Economy and efficiency in government" must be maintained in order that basic services to the community are not cut short," he continued.

He attended St. Anthony's School here and is a graduate of Belleville High and William Paterson

College where he received a bachelor of science degree in criminal justice. He is presently employed as an investigator with the N. J. Division of Motor Vehicles.

Pizzi is also a member of the Patrolman's Benevolent Association Local 91.

Residing at Columbus Avenue, Pizzi and his wife, Brenda, are the parents of two children, Danielle, 7 and Michele, 5.

GRAND UNION
SUPERMARKETS

CANNON TOWELS

From The Monticello Collection

Thick, soft, absorbent luxurious towels from famous Cannon Mills. Choose from five solid colors... Brown, Blue, Yellow, Green and White. Mix or Match... Your Choice. They're bound to lend new zest to your decor.

24" x 48" Bath Towel
2.99

Es. with each 15.00 purchase - New with 100% cotton.

Smoked Ham
Fully Cooked - Water Added
Shank End
Some Slices Removed
89¢
Lb.

Butt End
Some Slices Removed
99¢
Lb.

TURKEYS
Fresh Grade "A"
Marval Gov't. Grade "A"
79¢
Lb.

Butterball Swift's Premium
89¢
Lb.

Ham Steaks
Fully Cooked
Center Cut
Smoked
Fully Cooked Untrimmed
Whole Water Added
16-20 Lbs. Avg. Weight
1.99
Lb.

Hams
Fully Cooked
Center Cut
Smoked
Fully Cooked Untrimmed
Whole Water Added
16-20 Lbs. Avg. Weight
1.99
Lb.

Chicken Legs
Perdue Whole
With Thighs
89¢
Lb.

Thighs
Perdue Fresh
Chicken
99¢
Lb.

Rib Eye
U.S.D.A. Choice
Boneless Beef
Roast - 3-5 Lbs.
3.99
Lb.

Rib Eye
U.S.D.A. Choice
Boneless Beef
Steak - Well Trimmed
3.99
Lb.

Corned Beef
Grand Union
Brisket
1.59
Lb.

Polish Sausage
Grand Union
City of Vac.
1.79
Lb.

Armour - Boneless Pork Shoulder
Smoked Butts
Water Added
1.89
Lb.

Plymouth Rock - Cooked Boneless Ham
Water Added
2.49
Lb.

U.S.D.A. Choice - Boneless Beef
Beef Rib Eye
Whole Untrimmed
9-11 Lbs.
City of Vac.
2.99
Lb.

Custom cut to your specifications into club steaks, roasts, with plenty for the freezer.

Family Pack Savings
SAVE A L.B. IN PKGS. OF 12 OR MORE

Pork Chops
Rib of Lo and
Center Cut
Combo
1.99
Lb.

Perdue Fresh
Chicken
69¢
Lb.

Chicken Wings
69¢
Lb.

Franks & Hot Dogs

Beef Franks
Perdue
Hot Dogs
1-Lb. Pkg.
1.49

Chicken Franks
Perdue
Hot Dogs
1-Lb. Pkg.
89¢

Beef Franks
Armour Star
Hot Dogs
1-Lb. Pkg.
1.19

Assorted Flavors
Hi-C Fruit Drinks
1-Qt.
14-oz. Can
49¢

Nestle's Hot Cocoa Mix
Pkg. of 12 Env.
89¢

With coupon below .75 or more.

Chunk Light - In Oil or Water
Chicken the Sea Tuna
6 1/2-oz. Can
49¢

With coupon below .75 or more.

Assorted Flavors
Shasta Diet Soda
12-oz. Cans
99¢

Service Deli Buys
IN STORES WITH SERVICE DELI

Weaver's - White Meat Chicken Roll
Half Lb.
99¢

Hard Salami
Armour Half
Banner Lb.
1.19

Potato Salad
Cottolengo
1-Lb. Jar
49¢

Cheese
Salamo Style
Provola
Half Lb.
99¢

Deli Bagels
Delicious
Doz.
99¢

Knishes
Gabi's
Fried
1-Lb. Pkg.
5.99

Franks
Hebrew
Kosher Slices
Lb.
1.99

Salami
Kosher
Hebrew National
Qr. Lb.
75¢

Bath Tissue
Grand Union
Asst. or White
1-Ply
Pkg. of 4 Rolls
69¢

Freshpak - Cut Green Beans
1-Lb. Cans
4.100

Apple Juice
Half Gallon
99¢

Beans
Green Giant
Green - Kidney Beans
1-Lb. Can
3.100

Heinz Ketchup
1-Lb. Jar
69¢

Ronzoni Ziti
Linguine
or Vermicelli
1-Lb. Can
3.99

Tomato Paste
Contadina
Full Fat
1-Lb. Can
4.100

Chock 'n' Nuts
Full Fat
1-Lb. Can
1.99

Contadina Sauce
Whole Kernel
Tomato
6-oz. Cans
1.00

Freshpak Corn
Whole Kernel
1-Lb. 1-oz. Cans
4.100

Fresh Dairy Buys

Assorted Flavors - Yogurt
New Country
8-oz. Conts.
3.100

Sealtest
Cottage Cheese
Small or Large
1-Lb. Jar
69¢

Margarine
Blue Bonnet
Non-Dairy
8-oz. Jar
59¢

Margarine
Weight Watchers
Non-Dairy
Pkg.
89¢

California Navel Oranges
113 Size
10.99

Anjou Pears
Sweet
1-Lb. Box
49¢

Apples
Golden Delicious
U.S. No. 1, 2 1/2" Min.
Lb.
49¢

Family Logs
Three-Door
Case of 6
15-7.99
Ex.
99¢

King of the Bakers Idaho Potatoes
5 Lb. Bag
5.79

Yams
Tasty
4 Lb. Box
4.100

Grapefruit
Seedling
White
6 Lb. Box
6.100

Oranges
Florida
Juice
10 Lb. Box
10.99

Health & Home Buys!

Tylenol Tablets
Contains No Aspirin
Btl. of 100
1.49

Signal Mouthwash
12-oz. Btl.
99¢

Diapers
Johnson's
Tendies
Disposable
Pkg. of 12
1.49

Valvoline
Motor Oil
Qt.
59¢

40¢ Off
WITH THIS COUPON AND PURCHASE OF ONE 2-LB. PKG. FROZEN

Shenandoah Turkey Roast
COUPON GOOD JAN. 25 THRU FEB. 1
LIMIT ONE COUPON PER CUSTOMER

This Week's Super Coupon Buys!

Nestle's Hot Cocoa
REGULAR OR MINI MARSH. MIX
PKG. OF 12 ENV.
89¢

WITH THIS COUPON AND PURCHASE OF .75 OR MORE EXCEPT ITEMS LABELED BY LAW, COUPON GOOD JAN. 28 THRU FEB. 3
LIMIT ONE COUPON PER CUSTOMER

25¢ Off
WITH THIS COUPON AND PURCHASE OF ONE 1-Qt. CONTAINER

Liquid Woolite Cold Water Wash
COUPON GOOD JAN. 28 THRU FEB. 3
LIMIT ONE COUPON PER CUSTOMER

Prices effective Sunday, Jan. 28 thru Saturday, Feb. 3 at all Grand Union stores in New Jersey (except Irving and Haddonfield), Rockland and Orange Counties. In order to ensure a sufficient quantity of sale items for all our customers we reserve the right to limit sales to 3 packages of any item unless otherwise noted. Not responsible for typographical errors.

SAVE!

WITH THIS COUPON IN TIME FOR THE HOLIDAYS

RENT-A-CAR BY THE DAY

From **\$10** A DAY

ALSO LOW MONTHLY & WEEKLY RATES AVAILABLE

ZEPHYRS \$10 • MONARCHS \$12

Call **746-2300**

CLAIRIDGE LINCOLN-MERCURY

4 LACKAWANNA PLAZA MONTCLAIR

Near RR Station

DAILY RENTAL SYSTEM

*This is a limited Mileage excluded

Clara Maass annual blood drive Feb. 27

Clara Maass Memorial Hospital will be conducting its annual community-employee blood drive Tuesday, Feb. 27, between 10 a.m. and 3 p.m. in the hospital's School of Nursing Auditorium on Newark Avenue.

Giving a pint of blood is virtually painless and only takes a few minutes, but the experience is rewarding for the donor in more

ways than one, a hospital spokesman notes. Donors will be helping to insure themselves and their families for the future with this "gift of life."

Just one pint of blood can go a long way toward helping others. The blood can be broken down for different medical treatments such as plasma, platelets, packed red cells and the clotting factor so desperately needed by hemophiliacs.

The Feb. 27 blood drive is being held in conjunction with the North Jersey-Essex County Blood Bank. The important drive is open to all members of the community as well as hospital personnel.

For additional information regarding the blood donor program at Clara Maass, call the hospital at 751-1000.

Same day surgery plan popular at Mountainside

More than 2,100 patients have been treated under Mountainside Hospital's same day surgery program during the past year — the program's first year of expanded operation.

Many of these people would have had to spend a night or several nights in the hospital if it were not for this program which allows patients to come in in the morning, undergo their surgical or medical procedure and leave in the afternoon.

During the past year both the volume and the variety of procedures done under same day surgery has increased significantly, said Penny Wood, R.N., same day surgery coordinator.

"We started off the program by doing the simpler surgical procedures, now we are seeing more complicated procedures being performed here," she added.

Under the program, for example, children are being admitted for ear procedures that require general anesthesia. Allowing the child to come in, have the procedure done in one day and go home that afternoon, is a great advantage for both the parents and the child, explained Mrs. Woody.

"The mother can be with the child until surgery and the child does not have to go through the trauma of staying overnight."

In addition to patient convenience and the psychological advantage of recuperating at home, same day surgery offers the long range benefits of more efficient use of acute care hospital beds and a savings in health care dollars.

The same day surgery suite is staffed by three nurses, all of whom have surgical experience. Patients are scheduled for various procedures through their private physicians.

Surgical procedures that are done on a same day surgery basis include general surgery; ear, nose and throat

Belleville AARP meets today to hear firemen

Belleville Chapter 2051 of the American Association of Retired Persons (AARP) will hold its monthly meeting today at the First Presbyterian Church, Union Avenue, beginning at 1 p.m. The Belleville Fire Department will present a first aid program geared to retire persons.

An upcoming event is the AARP's Feb. 13 visit to Lyle's Play, "Where Charley," Cost for the luncheon program is \$10 which includes the theater ticket. Members, however, must supply their own transportation. Starting time is 12 noon and reservations paid this week.



Deanna's
V.I.P. Hair Boutique
One La Conit, Prop.
529 Joralemon St.
Belleville, N.J.
759-6633

NOW AVAILABLE

- Haircuts
- Expert Unisex Work
- Painless Ear Piercing
- All types Waxing
- "Pretty Feet" Pedicures
- Special Attention to the Younger Child
- Senior Citizens
- Specials - Tues. & Wed.

Giordano's Gym & Health Club

- Power Lifting •
- Olympic Lifting • Body Building •
- Sauna — Whirlpool •

Instruction In Athletic Fitness & Full Range of Strength & Fitness Programs

Phone (201) 759-8414

538 Washington Ave. Belleville, N.J. 07109

PARK MANOR

NURSING HOME
Dedicated to Better Patient Care
Specializing in Female Patients

PROFESSIONAL NURSING STAFF
REHABILITATION PROGRAM
PHYSICAL THERAPY
OXYGEN FRACTURE EQUIPMENT
SPECIAL DIETS

- AGED
- CONVALESCENT
- CHRONICALLY ILL
- POST-OPERATIVE

23 Park Place, Bloomfield
743-7772

Member of National Nursing Home Assoc.
Professional Care in a Homelike Environment

LET US GET YOUR CAR



BACK ON ITS FEET!!


TOYOTA TROUBLES?
Most repairs in one day!
New + rebuilt TOYOTA parts
in stock

EXTRA GOOD AUTOMOTIVE

267 RIVER ROAD
NORTH ARLINGTON, 998-4651
Seven Blocks North of the Belleville Bridge

"Toyota Our Specialty"

MECHANICS CERTIFIED BY NATIONAL INSTITUTE
FOR AUTOMOTIVE SERVICE EXCELLENCE



Umberto's Corner

Dear Umberto:

My sister has a stubborn husband who, like the rest of Italian men, likes her to wear long hair. The longer it grows, the finer and scarier it becomes. I told her that she would be better off with short hair so that it would look much fuller. She refuses to believe this.

Please settle this problem for us. We both read your column. The Sister-in-Law of Stubborn Italian Dear Sister-In-Law.

Not all Italian men like long hair on a girl. Take it from me, like whatever is becoming on the individual whether her hair is long or short. It is true that if you have fine hair, it is not advisable to keep it long.

If her husband likes long hair, there is a style that is short but looks long. It is cut in layers, short on top, long and longer toward the bottom — the Layered Look. This method gives the appearance of long hair but is fuller and healthier.

P.S. HAPPY BIRTHDAY TO BERTHA VREELAND

TO LUCY PARADISE: I can't believe you are 90! You move faster than I do. Where do I go wrong??????????

Umberto of Naples

547 Haircutting and Coiffures
549 Unisex Haircutting Extension
Washington Ave., Belleville
759-4900

FREE PARKING at 547 Washington Ave.

Miss Olimpia Bruno, John Cifelli to Wed

Mrs. Immacolata Bruno of Newark announces the engagement of her daughter, Olimpia to John Cifelli, son of Mr. and Mrs. Guido Cifelli of 54 Ernest Street, Nutley.

The troth was made known Christmas Eve.

Miss Bruno, an alumna of Essex County Vocational and Technical High School, is a legal secretary at Motor Club of America, Newark.

Mr. Cifelli, an alumnus of Nutley High School, is a baker.



Mr. and Mrs. Keith S. Shaw - nee Sharon Lee Dunskey

Debra Nardiello to wed Mauncele

Mr. and Mrs. Domenick Nardiello of Hazlett announce the engagement of their daughter, Debra, to James Mauncele, son of Mr. and Mrs. Nicholas Mauncele of Belleville.

Miss Nardiello, a graduate of Raritan High School, is a secretary with Hazlett Municipal Hall.

Mr. Mauncele, an alumnus of Belleville High School, attended Chowan College, N.C. and is co-owner of Chancellor Cleaners, Irvington.

The wedding is planned for Sept. 22.

Sharon Dunskey becomes bride of Keith S. Shaw of Brooklyn

Wedding vows were exchanged Dec. 23 by Miss Sharon Lee Dunskey, daughter of Mr. and Mrs. David C. Dunskey of Belleville, and Keith S. Shaw, son of Mr. and Mrs. Philip Shaw of Brooklyn, N.Y.

Rabbi Noah Burstein performed the ceremony at Richfield Regency, Verona. Mrs. M. Passey, sister of the groom, was matron of honor with Miss Cynthia Duh as maid of honor. Martin Passey was best man.

Mrs. Shaw, an alumnus of Belleville High School and Trenton State College, is supervisor of the customer service department, Dun and Bradstreet, Berkeley Heights.

Mr. Shaw, a graduate of Stuyvesant High School, New York City

and Brooklyn College, is working on his master's degree in political science at the New School for Social Research. He is an accountant in New York City.

The couple have made their home in Ford.

Dr. Schail C. Frank
Surgeon Podiatrist

SPECIALIZING IN PODIATRIC MEDICINE & FOOT SURGERY

is located at
567 Franklin Ave., Belleville-Nutley Line
759-6298

HOURS DAILY BY APPOINTMENT

ADVERTISERS DON'T MISS IT!!

The Nutley Sun


the Belleville times/news

Washington's Birthday Sale

SPECIAL TAB INSERT

Thursday, Feb. 15th Edition

For Details
Call 667-2700



BELLEVILLE BULLETIN BOARD

Saturday's Jubilee the highlight

(Items for the Belleville Bulletin Board may be sent to 246 Washington Ave., or telephoned to the Times/News at 759-3200.

THURSDAY, FEB. 1

Noon Lions Club meeting, Fountain Restaurant — 46 Watessing Ave.

1 p.m. Essex County Park Commission Senior Citizens Club — Belleville Ave. in the park.

1 p.m. AARP monthly meeting with first aid program by Belleville Fire Department, — Fewsmith Presbyterian Church, Union Avenue.

6:30 p.m. Kiwanis Club, — Fountain Restaurant, 46 Watessing Ave.

6:30 p.m. Optimist Club (Belleville Chapter) — Villa Italia, 501 Washington Ave.

7:30 p.m. Fireman's Mutual Benevolent Association (FMBA) — Fire Headquarters, 434 Washington Ave.

8 p.m. Benefit basketball game involving N. J. All-Stars vs. Belleville Board of Education. — BHS gymnasium, Passaic Avenue.

8 p.m. Varsity Club. — Little League Building.

8 p.m. Belleville Jaycees. — Fountain Restaurant, 46 Watessing Ave.

8 p.m. Joseph McGreevey Civic Association meeting.

8 p.m. Rent-Leveling Board. — Town Hall.

FRIDAY, FEB. 2

1 p.m. Belleville Senior Citizens' Social Club meeting. — Recreation House, Franklin Avenue at Mill Street.

SATURDAY, FEB. 3

8 p.m. Diamond Jubilee dinner-dance of Belleville Knights of Columbus Council 835. — Gene Boyle's Restaurant, 777 Passaic Ave., Clifton.

8 p.m. Belleville varsity wrestlers at Essex Catholic High School.

SUNDAY, FEB. 4

3 p.m. Nutley Symphony Orchestra concert featuring Elizabeth Marshall, concert pianist, who will play Brahms concerto No. 2. Program also includes Carnival Overture of Dvorak and Schubert's Ninth Symphony. Cost underwritten by Nutley Savings & Loan Association with seats free to public. — Nutley High School Auditorium, 300 Franklin Ave., Nutley.

7 p.m. Veteran Boxers' Social Club. — 117 Malone Ave.

8 p.m. Belleville Historical Society. Program: "Life of Helen Keller." — Christ Episcopal Church, Washington Avenue.

8 p.m. Zoning Board of Adjustment meeting. — Town Hall.

WEDNESDAY, FEB. 7

9:30 a.m. Belleville Retired Men's Club. — Fewsmith Church, 444 Union Ave.

12:15 p.m. Belleville Rotary Club. — Chandelier Restaurant, 340 Franklin Ave.

1 p.m. Senior Citizens Club sponsored by Essex County Park Commission. — Belleville Ave. in the park.

6:30 p.m. Branch Brook-Belleville Kiwanis Club dinner meeting. — Biase's Restaurant, 451 Bloomfield Ave., Newark.

8 p.m. Executive board meeting of the Belleville Citizen's Union. Public welcome. — "Recreation" House, Jorammon St.

8 p.m. Belleville Democratic Club membership meeting. — Chandelier Restaurant, 340 Franklin Ave.

MONDAY, FEB. 5

1 p.m. Essex County Park Commission Senior Citizens Club — Belleville Ave. in the park.

7 p.m. Board of Education meeting. — Schogl 8.

8 p.m. Knights of Columbus. — 88 Bridge St.

8 p.m. Elks Lodge 1123 meeting. — Lodge Bldg., 254 Washington Ave.

TUESDAY, FEB. 6

9:30 a.m. Belleville Old Guard meeting. — Knights of Columbus Hall, Bridge St.

3:45 p.m. High School Sports Irving varsity basketball at Belleville. Belleville girls' basketball at Irvington.

Setting up IRA accounts can result in tax break

An employee not covered by a qualified retirement plan can set up his own retirement plan and get a tax deduction for the amount he puts into his retirement savings, up to a maximum of \$1,500 a year. The deduction is permitted whether or not he itemizes deductions because it is a direct deduction from gross income. The savings account, which is called an IRA (individual retirement account) will earn tax-free interest until it is taken out of the account, usually upon retirement after the age of 59½ or earlier because of disability.

RUMBLE SEAT DISCO
WED. - FRI. - SAT.
9:00 P.M. - 1:00 P.M.
SUNDAY TEEN DISCO
1:00 P.M. - 6:00 P.M.
748-6558
2 Montgomery St. Bloomfield, N.J.

FOR UNITED WAY PROJECTS

Need Belleville volunteers

The Voluntary Action Center of the United Way of Essex & West Hudson is looking for Belleville citizens to help fill manpower requests for charitable causes.

The action center of this task listed some of the hundreds of requests that are received from helping organizations throughout the Essex-West Hudson area. Bellevillites interested in helping are asked to telephone 624-8300 to learn specific details and any of the other many other opportunities available.

Hostess — Tour the New Mother's Unit of a large urban hospital with refreshments during

visiting hours, 1:30-3:30 p.m. Chat with mothers and guests. Admire babies.

Group Project — Assist elderly and low-income people with their income tax returns. No previous experience with tax returns necessary. Training for group provided at your meeting place, at your convenience, by IRS tax experts. You might even learn something to your own advantage. Commit four hours a week, now through April.

Arts & Crafts — Instruct and assist elderly in crafts projects. Use your imagination, and draw upon

Slides from your trip — Show

slides from your trip to patients in a county hospital. Or demonstrate your hobby or collection. Any time. Theater-Lover — Assist a local not-for-profit theater company in their office. Get to see free rehearsal performances as part of their Volunteer Corps.

Empty Lap? — Pre-schoolers in a day care center need tuddling, buttoning, shoe-tying. Story-tellers welcome. Any weekday. Especially mornings.

Spanish Speaking — Newark hospital needs translators in its emergency ward. Especially evenings and weekends. Person who is not easily flustered.

One to One — Help a retarded adult become self-sufficient by teaching him to cope with daily living. No special skill required, only your concern.

Drivers — to take elderly or handicapped to medical appointments. Car and insurance supplied. Days, Newark and suburbs.

Personnel — county-wide youth agency needs new members for Personnel Committee. Review job descriptions. Plan training programs for volunteers and staff. Evenings.

Shop Rite has booklet all about canned foods

Canned foods and the canning process are the focus of attention in a new, free pamphlet entitled, "All About Canned Foods."

The pamphlet, available at the new Nutley Park Shop-Rite, is prepared as a public service by the Consumer Affairs Department of ShopRite Supermarkets. The step by step canning process is explained for the washing and sorting of a fruit or vegetable, straight through to packing, processing and labeling.

Highlighted in the pamphlet are explanations of the nutritive values of canned foods, can codes, can compositions, weights and volumes of canned foods, the best storage situation for canned foods, and factors that affect the wholesomeness of canned foods.

"All About Canned Foods" is part of ShopRite Supermarkets' ongoing Health Education and Labeling Program (HELP) developed to assist consumers with

buying decisions.

Copies of "All About Canned Foods" are available at all of the 188 ShopRite Supermarkets from Massachusetts to Delaware or they may be obtained by writing Mrs. Sylvia Nadel, Consumer Affairs Department, ShopRite Supermarkets, 600 York Street, Elizabeth, N.J. 07207.

Truck accident rate drops by one percent on turnpike

Truck accidents have decreased by more than one percent on the New Jersey Turnpike since the State Police initiated its Accidents Reduction Program in August 1978.

Turnpike Executive Director William J. Flanagan complimented the State Police for its special task force focusing on commercial vehicle operations and conditions for the four-month period through December 3, 1978.

C & D MARKET & DELI
116 Washington Ave., Belleville
751-7320
WE DELIVER
OPEN 7 DAYS A WEEK
HOT AND COLD CATERING
"Try us and you won't be sorry"
"Catering from C & D... That's for me."
ALL SPECIALS FOR 2 WEEKS ONLY

64 oz. COTT SODA 89¢ + tax	LEAN AND DELICIOUS DOM. HAM 99¢ ½ lb.
THUMANN'S LIVERWURST 79¢ ½ lb.	NINE LIVES CAT FOOD \$1.00 4 cans + tax
TURKEY BREAST \$1.09 ½ lb.	USDA X LG EGGS 89¢ doz.

Look For Our Hot & Cold Daily Sandwich Specials!

HOT TAYLOR HAM & CHEESE RUBEN	B.L.T. HOT PEPPER & EGGS
B.B.Q. SPARE RIBS HOT ROAST PORK	ANTIPASTO

Franklin Theatre
Nutley 987-0100
NOW PLAYING!
A Terrifying Love Story
MAGIC
Starring Anthony Hopkins
and Ann Margaret
RATED R

THE NEW GIOVANNI'S
180 Franklin Ave. (Next to Dante's Bakery)
ITALIAN RESTAURANT & PIZZERIA
Specializing in Fine Italian Cooking
FREE DELIVERY
6 DAYS A WEEK
667-6477
We Deliver 6 Days A Week
Ask About Our Catering Service

Bourbon Street Pub
Fri. & Sat. Feb. 2nd & 3rd
RUMFUS
Every Wed. Jan. 31st Thru Feb. 28th
SIDEWALK SYMPHONY
Live Entertainment Weds. & Thurs.
LUNCH DAILY
26 Ridge Road-No. Arlington 991-5094

Give now—live later.

Helping you — and your family — avoid a heart attack. Survive a heart attack. Or adjust to life after a heart attack is why we're in business. But we can't

continue our work without your contributions. Give now — live later. Send your check to: Essex County Heart Association, 70 East Park Street, Dept. #41 East Orange, New Jersey 07017.



ESSEX COUNTY HEART ASSOCIATION
A chapter of the American Heart Association

school page

BHS may approve final exemptions

By CHRIS NEIDENBERG

Reports by the new Grievance Committee highlighted the BHS Student Government Organization meeting two weeks ago by questioning whether final exam exemptions should be enacted.

The committee petitioned Principal John DiCesare and sent several proposals to him for evaluation. DiCesare reacted with a plan that called for the exemption of students who have attained a 3.8 average over

their past four years in the high school, which was sent to the faculty for final approval.

The Grievance Committee also dealt with the Belleville wrestlers, who complained that the gym teachers did not allow them access to the gym during school hours to use the scale.

The scale is located in the locker room and weight is an important factor in the wrestling program. The committee, therefore, set up a special

meeting with the wrestling coach Gene D'Aellesandro, several wrestlers and gym teachers.

Parking problems were also on the committee's list of priorities. A poll will be taken in all homerooms to see if the students and the faculty approve of assigned parking spaces and also if they would vote for more parking space created in the area between the basketball courts and the current parking lot.

As a result of the committee discussion, a "suggestion box" will be set up in various areas of Belleville High in order to make the Student Government Organization "more accessible" to the students.

The Rules, Publicity and Calendar committees reported that they will help the organization by establishing regulations to see that meetings be conducted properly, setting up a bulletin board in the cafeteria to contain any pertinent announcements.

The committees also stressed that advisors and coaches of extracurricular activities post events on a school calendar located in the main office in order to eliminate scheduling conflicts between their activities and SGO activities.

Other matters discussed at the meeting included talk of the possibility of establishing a committee to deal with issues that pertain solely to the cafeteria.



Fewsmith Concert — The Belleville High School Concert Choir, under the direction of Thomas Finetti, recently performed at Fewsmith Memorial Presbyterian Church, located at 444 Union Ave.

Students obey discipline code despite much dissatisfaction

The attendance and discipline code policies at Belleville High have been doing a good job in keeping the school in good shape, according to a recent poll.

School officials say attendance and overall behavior of students has improved, but there are students who will violate these codes.

Violation of these codes can result

in school suspension or even a loss of credits. A loss of credits will occur if a student is either absent or late several times and this could also result in a school suspension.

Students at Belleville High School commented that they particularly don't "like the codes, but do try to follow them." Most students feel the codes are working and are enforced well, but they feel they are

being "treated like babies" in the code enforcement. Several students feel 20 absences is not enough leeway while other students commented that the codes are unfair because some students have good reason for absences.

Overall, attendance and tardiness at Belleville High has improved, but still students do violate the codes.



Portuese receives Bucs MVP award

By MICHELLE JEANNOTTE and PAULA SANTUMO

Karen Portuese, 27 Howard Place, a member of the Belleville Bucs girls' basketball team, was awarded most valuable player in the Livingston Christmas Tournament, Wednesday, Dec. 28.

"I think being awarded M.V.P. was the most exciting thing that ever happened to me. When you work hard and have something to show for it, it makes you feel proud," Miss Portuese said.

Her basketball career began by watching the other kids play at Kelly's Playground when she was about seven years old. After the older kids left, Miss Portuese would try to

imitate them and was determined to learn how to play.

For the remainder of the season, Miss Portuese has a very positive outlook and feels the team has developed mentally and physically. "The girls put a tremendous amount of hard work into what they do and one can see this effort when they are on the court," she said.

Miss Portuese's athletic ability goes beyond the basketball court. She is a member of the track and field team where her main event is throwing the javelin.

In the future, she plans to attend college and major in physical education. She also hopes to play basketball and influence others in the game.



Pomp And Circumstance — Two four year old residents enjoy refreshments after their graduation last Friday from the Belleville Recreation Department Pre-School Play Program. Twenty-five residents participated in the ceremony.

Four year old residents graduate from program

The Belleville Recreation Department held "Graduation Day" last Friday for 25 four year old youngsters from the department's Pre-school Play Program.

The graduates included: Kimberly Albert, Philip Avello, Jessica Marie Dunn, Peter Fabiano, Marie Katherine Ferrent, Robin Fornarolo, Tracy Mac Garlwaite, James T. Kiernan, Matthew Landolfi, Stephen Lipesky, John Lawrence McAloon Jr., Beny Marshlian, Scott Mayers, Michael Melham, Tina Sciacchitano, Marie Antoinette Sabatino, Kimberly Marie Smith, David Sottilare, Jennifer Ann Torti, Michael Trupia, Vincent Vacca, Jr., Jill Hildy Watowski, Jennifer Wesolowski, Carey Woodruff and Cristine Woodruff.

The program, which has endured

for 23 years in Belleville, runs for fifteen weeks at a cost of \$30 per child. It is conducted twice a year during fall and spring.

Mrs. Susan Iannini instructs the children and three mothers are required in attendance each day. The mothers of the children must attend one day of every eight in the program.

The department members emphasized that the program is a "play" program geared to help children interact and cooperate with other children and instructors in a school like setting.

A new session will begin on Monday, Feb. 26 and openings are still available. Children must be four years old and residents of Belleville. Interested persons can contact the Recreation House at 759-3121 for more information.

Artist decorates Teacher's Cafe

In efforts to redecorate Belleville High, many artistic students have been discovered through their works dotting the school halls. Jackie Kiernan is one of those artists.

Miss Kiernan recently completed a picturesque mural in the teacher's cafe which required two hours of work a day for three weeks.

"I jumped at the chance when Mrs. Jane Pulco, art teacher, asked me to do it," Miss Kiernan said. "It was a great challenge."

The mural is an outdoor scene containing a river and the aspects of nature surrounding it like trees and mountains.

"I was very pleased with the result and I received many compliments from teachers and friends," Miss Kiernan added.

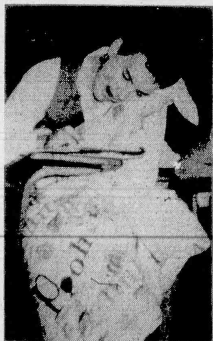
Miss Kiernan has recently been accepted to Spectrum Art Institute where she wants to pursue a future career in commercial art and illustration.

Taking lessons in art for over six years, Miss Kiernan noted her parents as "giving me a lot of support."

Her other accomplishments and credits include: first place for a window painting contest on Washington Avenue; an exhibition at the teachers' convention in Atlantic City and at the recent art show at the Belleville Town Hall parking lot and various displays in the local library.

Miss Kiernan presently works at the Mande Shop in Keary where she creates display settings in sales.

The artist also enjoys hobbies of dancing and roller skating.



Linus' Is Content — Ken Lusnia as Linus enjoys his familiar blanket during a school assignment in a scene from "You're A Good Man, Charlie Brown." The Belleville High School drama club will present the play beginning Thursday, March 1.

FREE PUBLIC CONCERT

Nutley Savings invites everyone to attend the

NUTLEY SYMPHONY ORCHESTRA CONCERT

Dr. Ernest J. Ersfeld, Conductor

Be our guest!

SUNDAY, FEBRUARY 4th - 3 P.M.
Nutley High School Auditorium
300 Franklin Avenue, Nutley

The program will feature:
Carnival Overture, Opus 92 — Dvořák
Symphony No. 9 in C — Schubert
Concerto No. 2 — Brahms
Elizabeth Marshall, Pianist

Support the Nutley Symphony
Send donation to:
NUTLEY SYMPHONY SOCIETY, INC.
515 PROSPECT STREET
NUTLEY, N.J. 07110



Nutley Savings

AND LOAN ASSOCIATION
371 FRANKLIN AVENUE NUTLEY N.J. 07110
PHONE 841-3000

times/news sports

Mike Lamberti's

Buc Shots



Fuccello's girls out of the shadow

Not nearly enough has been said about the Belleville High School girls' basketball team.

Having been overshadowed for so many years by the boys' basketball and wrestling teams, the girls are beginning to get some long overdue recognition this year.

And rightfully so. The woman have compiled a 12-2 record, are ranked number three in the area and according to their head coach, Karen Fuccello, have not yet reached their peak. "I feel they still can be better," says the fourth-year coach. "We're playing the toughest part of our schedule now, and we should get an idea of what we are made of."

One of the girls' most recent games was a 32-29 win over Montclair. It wasn't exactly one of their better efforts of the season considering that the Mountie ladies had only a 3-8 record, but the local girls were happy to take the win anyway.

Belleville had posted victories over St. Joseph's, Cedar Grove and Livingston before suffering its first loss at the hands of powerful Columbia. The game with the Cougarsnettes was a devastating wipeout as the Blue-Gold was turned a sickly pale 57-25. Fuccello attributed the loss to lack of determination and the fact that her troops were just plain psyched out.

After the Columbia debacle, the home heroines got back on the winning trail with victories over Caldwell, Hoboken and Summit in the first round of the Livingston Christmas Tournament. In the championship round of that event, Belleville blew a big lead and lost in double overtime to West Morris 37-36. It was after that game that Fuccello began stressing good physical conditioning. She blamed the West Morris loss on her girls' running out of steam late in the game.

With conditioning much on their minds, the Buccanettes entered the always tough month of January. In that month, the team met the likes of Passaic, Nutley, Paterson East Side, Montclair and Irvington twice. Since the loss to West Morris, the girls have been perfect, beating Kearny, Passaic, Nutley, Paterson East Side and Montclair.

The win over Nutley was especially pleasing because the Buccanettes have dominated Belleville in girls' basketball over the years. The last time a Belleville team beat Nutley in the regular season was in February of 1975.

The Blue-Gold followed the Nutley win with a great triumph over Paterson East Side, ranked number one in the area. The victory was especially thrilling because it came in double overtime. The game made a prophet of sorts out of Fuccello who had said that her team would not lose again the way it did to West Morris.

The starting lineup this season is a fine mix of juniors and seniors. The center is junior Robin Giordano. Two years ago, Robin had trouble dribbling and running at the same time. Today she is establishing herself as a dominant force in the pivot.

At the forward positions are junior Joyce Iacullo and senior Denise Juliano. Iacullo has the potential to be an all-star performer by next season. She has an excellent shot, can handle the ball quite well and is just a plain good all-around player. She scores in double figures in every game and should be a widely respected player next season, if not by the end of this one.

Juliano is one of those players who doesn't score a lot of points but makes her presence known to the opposition. Call her Jack Lambert of high school basketball. She's quick, aggressive as hell and is the team motivator. She gets extremely psyched up for the games and works a tub up to the same intensity at times.

The guards are seniors Karen Portuese and Denise Zarra. Portuese or more familiarly, Port, can shoot the eyes out of the ball when she's on. She is the team captain and has played on the varsity level now for three years. Port was named MVP of the Livingston Christmas Tournament. Perhaps her biggest asset is her great ball handling. An opposing guard must either be Earl Monroe, extremely lucky or the referee's daughter to steal the ball from Port.

Zarra, known as Earnie to her teammates, is just as good a ball handler as Portuese but isn't as offensive-minded. Zarra plays the game with great hustle and determination. She never gives up and fights to the end.

The team doesn't end with its five good starters. The Blue-Gold has a bench full of girls very eager to play, and when they are on the court they place like they want to stay there forever. What makes matters even better is that the jayvee team is also quite good. Under second-year coach Debbie Meola, the girls have a 6-2 record. Last year they posted a 7-1 mark, one of their wins coming over Columbia.

Success has not come overnight for Fuccello. She is in her second go-around as head coach. You see, before Karen took over as pilot in 1975 she was the head coach from 1972-74. In those two years, her coaching record was 10-2 and 12-4. Her teams were highly respected in the area and in the latter season had advanced to the second round of the state tourney before losing a heartbreaker to Columbia.

"In the early years, girls sports in Essex County were just growing," said Fuccello. "I think the reason why we were so successful was because of hard work and the girls going to basketball camp. We practiced five days a week, which was something that teams did not do then. The main key though was organization. We stayed together and concentrated on doing our best."

At the end of the 1973-74 year, Fuccello took a year's leave of absence. In that year the team posted a respectable 9-8 record. She returned for the 1975-76 season realizing that a massive rebuilding program was in order. "I figured it would take three seasons to be a winner again," continued the coach. "Unlike the earlier years, I attribute our success to our

Please see "Lamberti's Buc Shots" on page 10.

Buc matmen turn the corner with pair of convincing wins

By Mike Lamberti

The Belleville High School wrestling squad came up with two big wins last week as it defeated both Madison Borough and Kearny.

The two wins raised the team record to 5-2-1. The local grapplers will be in action this Saturday when they travel to Newark to battle the tough Eagles of Essex Catholic.

The Madison match was an especially big win because the Madison team was undefeated. The Bucs ended that string with their 24-14 victory.

Belleville never trailed in the match and jumped out to a 3-0 lead when Tom Graziano outdueled his 101-pound opponent.

In the 108-pound class, team captain Jim Cali continued his winning ways as he used a whizzer move in the waning seconds to defeat his opponent by one point. Cali has lost just once in dual match competition this year.

The Blue-Gold continued its

dominance as 115-pounder Gerard Minichini outmaneuvered his opponent 8-0.

Madison won its first bout of the contest in the 122-pound weight class as its man defeated the Bucs' Lou Pomponio 5-2.

Mike Stellatella of Belleville was a 6-4 winner in a match that wasn't as close as the final score might make it seem. According to head coach Gene D'Alessandro, "Mike wrestled very well and was in control the entire match. I don't think the final score was really indicative of how he performed."

Ken Miele of Belleville lost a tough match in the 135-pound class as he was beaten 3-2 at the buzzer. According to the coach it was an upside-down, step over move that cost Miele the match.

Bob Scherer (141) of the Bucs has been performing quite well all season, and he continued his impressive ways with an 8-2 victory.

The very versatile Jim D'Angelis

Please see "Matmen" on page 10.

Martin helps end hoopmen's slump

With Pete Martin leading the way, the Belleville-Buccaneer basketball team snapped a seven-game losing streak with a 68-65 victory over Weehawkin Monday.

Earlier in the week, the Bucs lost to Montclair, 80-34 and were beaten by a very good Passaic team in a toughie 74-69. The Bucs, now 4-11 on the year, traveled to Irvington yesterday. They will not see action again until next Tuesday when they are host to Irvington starting at 3:45 p.m.

The Montclair game was really no contest from the outset. The Bucs knew that they would have their hands full covering Montclair's 6-8 center, Craig Robinson, and his 6-7 forward, Gregory Hines.

Montclair jumped out to a 16-6, first-quarter lead as Robinson led the way with six points. The Mounties really did not look that impressive but controlled the offensive boards with relative ease. The second frame was more of the same as the Mounties outscored the Bucs 15-6 and took a 31-12 lead into intermission.

The third frame was a complete blowout from the Bucs' point of view. The Mounties simply came at them with everything but the kitchen sink, outscoring the Bucs by 15 points and taking a 58-24 lead going into the last frame. The fourth quarter was a carbon copy of the first three frames as Montclair came out on top 22-10 enroute to the 80-34 win.

Even the presence of former Belleville basketball great Abdel

Anderson could not have changed the Bucs' fate. Head coach Dan Grasso was not at all pleased with his team's performance. "We knew we were in for a battle," said Grasso. "Our guys did not play nearly to their potential, and the result was an embarrassing loss for us. If we don't shape up we're going to have another rough time tomorrow against Passaic."

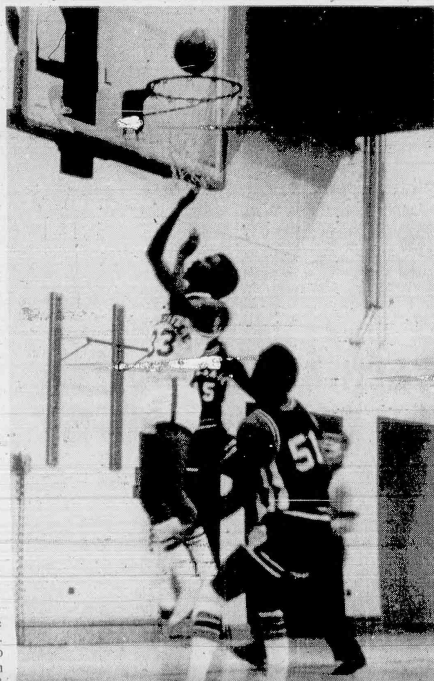
Robinson led the way for Montclair as he chipped in 26 points. Gregory Hines added 13 for the Mounties who are now 11-5. Wayne Bubes was the only Buc in double figures as he popped in 12 points.

Grasso had good reason to worry about Passaic. The Indians had a 9-2 record and were ranked in the top 20 in the state. They were just as big as Montclair and were supposedly better. So what did the Bucs do? They battled the Indians to the wire before losing by five points in the waning seconds.

Belleville played a whale of a first quarter and led 14-12. In the second frame, Passaic got its motors running and outscored the locals 22-14 to take a 34-28 lead at halftime. In the third period, the clubs played even basketball with Passaic holding on to a 55-50 lead going into the last frame.

Belleville cut the margin to 70-69 with less than a minute left before the Indians scored two quick baskets to preserve the win. Unlike the day before, Grasso was very satisfied with the way his team played. "They

Please see "Buc men" on page 10.



Making It Close — Belleville's Keith Isler goes in for two of his 20 points in this past week's game with the Indians. The Bucs lost a close one to Passaic but finally ended their losing streak Monday against Weehawkin.

Board facing stars at BHS gym tonight

Tickets will be available at the door tonight for the long-awaited basketball game between the New Jersey All-Stars and the Belleville Board of Education.

The game begins 8 p.m. at the BHS gym. Proceeds from tonight's event will go toward a courtyard in front of the high school for future use by senior students.

Playing for Belleville will be the town's Board of Education members. BHS gym teacher Paul Szem and residents Pete Vaccarelli and Rich Luzzi.

Paul Blair of the New York Yankees, Greg Buttle, Burgess Owens and Randy Rassmussen of the New York Jets, base-stealing champ Willie Wilson of the Kansas City Royals and members of the Oakland A's and Minnesota Twins baseball clubs will take to the court against the trustees.

The Stars will be coached by assistant Jet coach Joe Gardi and Fairleigh Dickinson University basketball coach Al LoBalbo, a former pilot of the BHS cagers. Yankee second baseman Willie Randolph may be on hand for a halftime autograph-signing session.

Tickets are \$3 general admission and \$2 for students.

Girl cagers run streak to seven by downing Montclair, Passaic

By Mike Lamberti

Success continues to reign over the fortunes of the Belleville High School girls' basketball team.

The girls added two more notches to their already loaded victory belt last week when they knocked off Montclair 32-29 and Passaic 61-40. The double win extended the local girls' unbeaten streak to seven. The team record is currently 12-7.

Belleville played host to the Camptown Ladies of Irvington last Tuesday, but the results of that contest were too late for this edition. The Buccanettes do not play again until next Tuesday when they travel to Irvington to take on those same Camptown.

BHS Head coach Karen Fuccello was not very happy with the way her team performed against Montclair.

"We did not play our type of game," said the coach. "Montclair played a slow-down type of game, and we were forced to play in our zone. It was a very slow game."

Belleville jumped out to an 8-6, first-quarter lead and held a 16-13 advantage over the 3-3 Mountie girls at halftime. Montclair would not fold and rallied in the third-quarter to tie the contest at 24. The Blue-Gold took control of the game in the last frame and came away with a three-point win.

Belleville was led by center Robin Giordano who popped in 11 points. Denise Zarra added six, Joyce Iacullo five, Karen Portuese four, Lisa Wells three and Denise Juliano three.

In the Passaic contest, Belleville was up against a fairly strong club. A couple of weeks ago the Blue-Gold

team had to work hard to earn a 48-40 win over the Squaws. The game last week was similar to the first contest with three quarters.

The Blue-Gold jumped out to an 8-4, first-quarter lead. The girls extended that margin to 22-16 at the end of the first half. The game was still close at the end of three quarters with Belleville leading 37-28. It was in the last quarter — the Blue-Gold got their acts together and blew the Indians off the court. Belleville outscored Passaic 24-12 in the final frame and came away with a convincing 61-40 win.

Robin Giordano was once again the Buccanettes' high scorer, this time with 20 points. She scored 10 of them in the second frame. Joyce Iacullo pumped in 14 of her 16 points in the second half. Karen Portuese scored 10 points, and in the last

frame, Denise Juliano had eight and Denise Zarra seven. Passaic forward Pat Zellars led all scorers, popping in 22 points.

Belleville will be the host-court for the quarter and semifinal rounds of the ECCA (Essex County Coaches Tournament). The quarterfinals will be held at Belleville on Feb. 17 with two games in the afternoon and two contests at night. The semis will be Wednesday, Feb. 21, with the first game at 7 p.m. The second game will begin at 9 p.m.

The Buc girls are in the tournament but do not know who their first round opponent will be. It should be a very interesting tourney with such powerhouses as East Orange, Columbia, Glen Ridge, Clifford Scott, Caldwell, East Orange Catholic and Nutley all entered.

Rec matmen to join county loop? Buc men lose toughie to Indians of Passaic

The Belleville recreation wrestling team, which has produced a national champion, two state champions, two runners-up and many high school wrestlers, hopes to join the Essex County Junior Wrestling League next season.

The league, consisting of Bloomfield, Caldwell, West Essex, Glen Ridge, Millburn, Cedar Grove, Livingston and Maplewood, has 14 weight divisions ranging from 55 to 140 pounds and a heavy-weight class. The town's junior wrestling team, which has wrestled each squad in the league this season under scrimmage conditions only, consists of 45 youngsters from the fifth to eighth grades. They practice Tuesdays and Thursdays at the high school and a session is held for boys grades one through four to introduce them to the sport.

Those wrestling for the juniors are Mondo Nardone, Mike Giuffrida, Mike Lijo, Brian Pomponio, Steve Mattia, Jim Racanelli, Jim Miele, Jim Demgari, Tony Lombardi, Tom Miele, Carmine Cerreto, Tom Pravata, Mike Wohl, Joe Sanger, Andy Colaninno, Ron Charles, Craig Mack, Luke Silletti, John Muzzicato, Dominic Cerreto, Jon Lijo, Dave Grant, Mark Palumbo, Anthony Lopomo, Tim Daudelin and Tim Buckley.

The head coach for both programs is Joe Zarra, in his eighth year at the helm. He is assisted by Rich Rinaldi, in his sixth year, Gerard Risoli, fourth year, and

Matmen demolish The Kards, 46-6

Continued from page 9

competed for Belleville in the 148-pound class. D'Angelis wrestled in three different weight classes and has done quite well in all three. In this match, he showed that he can compete and win in any class as he came through with an 8-4 triumph.

The 158-pound bout was something to behold. Belleville's Chris Mussamano, who hasn't lost at this season was up against a wrestler who hadn't lost a dual match in four years. The result, the Madison wrestler has now lost a dual match. Mussamano outwrestled the Madison foe 3-1, and Belleville was in control of the match.

Angelo Santinelli returned to action in the 170-pound class after being out for a couple of weeks with a knee injury. He performed valiantly against a highly rated Madison man and struggled to a tie. The most impressive part about the match was that Santinelli's opponent was undefeated this year.

The Belleville dominance continued in the 188-pound class when Buc Joe D'Agostino won a 6-1 verdict. Madison did manage one last win, that in the heavyweight class at the expense of Belleville's Scott Grant.

The Kearny battle was all Belleville from beginning to end as the Bucs won it 46-6.

Perhaps the biggest win for Belleville came in the 91-pound class. Tom Graziano of Belleville defeated a very strong wrestler in Paul Jerry 7-2. "It was a great win for Tom," said D'Alessandro.

Jim Calit breezed to a 10-2 win over Dave Petrozelli, in the 108-pound.

Belleville continued taking on the points as Gerard Minichini

GANTNER'S

Our 54th Year

160 Franklin Ave. Nutley 667-6622

Hardware • Houseware • Paint • Home Furnishings

40% OFF

WINTER GLOVES

All Men's-Women's-Children's

ALL BUXTON WALLETS

and JEWELRY BOXES

INFANT CLOTHING

20% OFF

ALL PICTURE FRAMES

ALL CORELLE CORNINGWARE

ALL REVEREWARE & FARBERWARE

ALL LADIES HANDBAGS

ALL SNOW SHOVELS

Mon. & Fri. 9-8:15
Tues-Wed-Thurs & Sat 9-5:45

Prices effective thru Feb. 10, 1979

Chico Lijo and Ron Grolimond, both in their second year.

Senior League Basketball
Belleville-Newark Honda, Mickey Music and the Lakers remained in a deadlock for first place in the Recreation Senior Basketball League this past week as all three clubs upped their records to 6-0.

Belleville-Newark Honda, paced by Danny Borgo's 31 points, Jim Kelley's 24 and Robert Barbara's 16, silenced Guiliano's 103-31. Borgo leads the league in scoring with 103 points. Jim Guiliano dropped in 11 for the losers.

Mickey Music remained undefeated by stopping Salvatore's Piz-za 51-24. Alan Talmadge and Stanley McDaniels led Music with 13 points apiece. Frank Snyder topped Salvatore's with nine.

The Lakers dumped DeBacco's 49-28 led by San DeCapua's 12 points and Anthony Dondarski's 12. Frank Danieli finished with nine points for the losers.

Channel Lumber took over sole possession of second place by stopping 3 Guys Pizza 52-30. George Lockhard netted 13 and Ralph Gallo wound up with 10 for Channel which won its fourth game of the season. Ralph Velardi, once the league's leading scorer, was held to 14 points.

Town Cottage improved to 2-4 by defeating Guarino's 52-41. A balanced scoring attack was the key to Cottage's victory as Pat Cicalese, Tom O'Kean and Ron Pennetti each scored 12 points. Steve Coffey led

Lamberti's Buc Shots

Continued from page 9

programs in the system and our seniors playing the game since they were freshmen."

Fuccello said that her seniors are the first girls to take advantage of the freshman program. The girls basketball program now goes down to the recreation stage at the seventh and eighth grade level.

All in all, things are going pretty well for a coach that endured two 6-16 records before finding the winning edge last season with a 13-8 mark. What makes this season so good is that the girls are a closely knitted outfit. They love to play and are always encouraging each other. And the way things look at Belleville for the girls, 1978-79 is only the beginning of a dynasty.

Continued from page 9.

busted their butts," said Grasso. "Anybody who knows anything about basketball and was at that game would have given anything to be a part of it. The kids played a great team and performed magnificently."

Passaic was led by Ray Jaceczak's 21 points. Keith Norwood and Ansley Aris added 14 apiece. Belleville's Pete Martin led all scorers with 28 points and Keith Isler added 20.

Belleville finally got back into the victory column when it traveled to Weehawkin Monday night. Earlier in the season, Belleville won its first game of the year with a 63-54 win over Weehawkin at Belleville. This time the Bucs took it to the Hudson County school on its court.

Once again it was Martin, the 6-5 senior center who has been playing tremendous basketball of late. Martin came through with another 28-point performance to lead the Bucs to a 68-65 win. Wayne Bubet and Keith Isler added 10 points apiece in the winning cause.

Belleville led 13-11 at the end of the first frame. Weehawkin battled

SWIMMING POOLS DISTRIBUTOR

forced to dispose of brand new 30' long above-ground pools complete with sundeck, fencing, filter and includes full installation.

Asking \$989
Financing Available
- Call Peter Collect
201 388-3116

BASEMENTS MADE DRY

- LOW PRICES
- TOP VALUE
- ALL WORK GUARANTEED
- COMPARE BEFORE YOU BUY!
- EXTERIOR DRY POURING METHOD
- CONCEALED DRAINAGE SYSTEMS
- SUMP PUMPS - CRACKS REPAIRED
- NO JOB TOO SMALL... CALL FOR FREE ESTIMATE

GUARANTEED ASSOCIATES INC.

CALL TODAY FOR FREE 800-562-3725 NO OBLIGATION (second choice of the nation)

OFFICES IN LITTLE FALLS & AVEHEI, N.J.

A BETTER MOUSE TRAP?

At Viola Bros. Home Center we think the best mouse trap is . . .

LOW, LOW PRICES PLUS

FRIENDLY KNOWLEDGEABLE SALES PERSONNEL to answer all your building questions.

FORGET WINTER WORRIES

Sakrete ALL-PURPOSE SAND

25 lb. Bag \$2.00
75 lb. Bag \$1.50

SALE \$1.50

STERLING HALT ROCK SALT

25 lb. Bag \$2.00
75 lb. Bag \$1.50

SALE \$1.75

Galvanized GARBAGE CAN

20 gal.

Reg. \$6.79 Sale \$5.88

Heavy Duty TRASH BAGS

20 gallon size

Reg. \$11.99 Sale \$6.99

TRUE TEMPER SNOW SHOVELS

With Rhino-Ribbed Blade. Be ready this winter... Aluminum heavy duty construction.

Reg. \$8.25 Sale \$5.95

INSULATION

FULL THICK FULL 1 1/2" Rock 70 Sq. Ft. Roll Foil Face R-11

Available in 15' & 22' Widths

Sale 14 1/2¢ per sq. ft.

TRU-TEST ICE-SCRAPER

Blade and shank not forget for strength. Baked enamel finish for protection. Reg. \$5.29

Sale \$3.99

WALL PANELING Georgia-Pacific

CHESTNUT Reg. \$6.95 Sale \$4.99

Ply-Gem Reg. \$7.95 Sale \$5.95

HARVEST ELM Reg. \$8.95 Sale \$6.95

WYETHAUS COUNTRY ROADS Reg. \$11.99 Sale \$9.99

SEE OVER 150 OTHER PANELS ON DISPLAY!

BLACK & DECKER JIG SAW

Reg. \$15.99 Sale \$10.99

FOOD PROCESSOR

Versatile for slicing, chopping, shredding, grating, blending, grinding, mixing, etc.

In less than 60 seconds it can: 1. Slice 2. Grate 3. Chop 4. Blend 5. Mix 6. Grind 7. Shred 8. Grate 9. Chop 10. Blend 11. Mix 12. Grind 13. Shred 14. Grate 15. Chop 16. Blend 17. Mix 18. Grind 19. Shred 20. Grate 21. Chop 22. Blend 23. Mix 24. Grind 25. Shred 26. Grate 27. Chop 28. Blend 29. Mix 30. Grind 31. Shred 32. Grate 33. Chop 34. Blend 35. Mix 36. Grind 37. Shred 38. Grate 39. Chop 40. Blend 41. Mix 42. Grind 43. Shred 44. Grate 45. Chop 46. Blend 47. Mix 48. Grind 49. Shred 50. Grate 51. Chop 52. Blend 53. Mix 54. Grind 55. Shred 56. Grate 57. Chop 58. Blend 59. Mix 60. Grind 61. Shred 62. Grate 63. Chop 64. Blend 65. Mix 66. Grind 67. Shred 68. Grate 69. Chop 70. Blend 71. Mix 72. Grind 73. Shred 74. Grate 75. Chop 76. Blend 77. Mix 78. Grind 79. Shred 80. Grate 81. Chop 82. Blend 83. Mix 84. Grind 85. Shred 86. Grate 87. Chop 88. Blend 89. Mix 90. Grind 91. Shred 92. Grate 93. Chop 94. Blend 95. Mix 96. Grind 97. Shred 98. Grate 99. Chop 100. Blend 101. Mix 102. Grind 103. Shred 104. Grate 105. Chop 106. Blend 107. Mix 108. Grind 109. Shred 110. Grate 111. Chop 112. Blend 113. Mix 114. Grind 115. Shred 116. Grate 117. Chop 118. Blend 119. Mix 120. Grind 121. Shred 122. Grate 123. Chop 124. Blend 125. Mix 126. Grind 127. Shred 128. Grate 129. Chop 130. Blend 131. Mix 132. Grind 133. Shred 134. Grate 135. Chop 136. Blend 137. Mix 138. Grind 139. Shred 140. Grate 141. Chop 142. Blend 143. Mix 144. Grind 145. Shred 146. Grate 147. Chop 148. Blend 149. Mix 150. Grind 151. Shred 152. Grate 153. Chop 154. Blend 155. Mix 156. Grind 157. Shred 158. Grate 159. Chop 160. Blend 161. Mix 162. Grind 163. Shred 164. Grate 165. Chop 166. Blend 167. Mix 168. Grind 169. Shred 170. Grate 171. Chop 172. Blend 173. Mix 174. Grind 175. Shred 176. Grate 177. Chop 178. Blend 179. Mix 180. Grind 181. Shred 182. Grate 183. Chop 184. Blend 185. Mix 186. Grind 187. Shred 188. Grate 189. Chop 190. Blend 191. Mix 192. Grind 193. Shred 194. Grate 195. Chop 196. Blend 197. Mix 198. Grind 199. Shred 200. Grate 201. Chop 202. Blend 203. Mix 204. Grind 205. Shred 206. Grate 207. Chop 208. Blend 209. Mix 210. Grind 211. Shred 212. Grate 213. Chop 214. Blend 215. Mix 216. Grind 217. Shred 218. Grate 219. Chop 220. Blend 221. Mix 222. Grind 223. Shred 224. Grate 225. Chop 226. Blend 227. Mix 228. Grind 229. Shred 230. Grate 231. Chop 232. Blend 233. Mix 234. Grind 235. Shred 236. Grate 237. Chop 238. Blend 239. Mix 240. Grind 241. Shred 242. Grate 243. Chop 244. Blend 245. Mix 246. Grind 247. Shred 248. Grate 249. Chop 250. Blend 251. Mix 252. Grind 253. Shred 254. Grate 255. Chop 256. Blend 257. Mix 258. Grind 259. Shred 260. Grate 261. Chop 262. Blend 263. Mix 264. Grind 265. Shred 266. Grate 267. Chop 268. Blend 269. Mix 270. Grind 271. Shred 272. Grate 273. Chop 274. Blend 275. Mix 276. Grind 277. Shred 278. Grate 279. Chop 280. Blend 281. Mix 282. Grind 283. Shred 284. Grate 285. Chop 286. Blend 287. Mix 288. Grind 289. Shred 290. Grate 291. Chop 292. Blend 293. Mix 294. Grind 295. Shred 296. Grate 297. Chop 298. Blend 299. Mix 300. Grind 301. Shred 302. Grate 303. Chop 304. Blend 305. Mix 306. Grind 307. Shred 308. Grate 309. Chop 310. Blend 311. Mix 312. Grind 313. Shred 314. Grate 315. Chop 316. Blend 317. Mix 318. Grind 319. Shred 320. Grate 321. Chop 322. Blend 323. Mix 324. Grind 325. Shred 326. Grate 327. Chop 328. Blend 329. Mix 330. Grind 331. Shred 332. Grate 333. Chop 334. Blend 335. Mix 336. Grind 337. Shred 338. Grate 339. Chop 340. Blend 341. Mix 342. Grind 343. Shred 344. Grate 345. Chop 346. Blend 347. Mix 348. Grind 349. Shred 350. Grate 351. Chop 352. Blend 353. Mix 354. Grind 355. Shred 356. Grate 357. Chop 358. Blend 359. Mix 360. Grind 361. Shred 362. Grate 363. Chop 364. Blend 365. Mix 366. Grind 367. Shred 368. Grate 369. Chop 370. Blend 371. Mix 372. Grind 373. Shred 374. Grate 375. Chop 376. Blend 377. Mix 378. Grind 379. Shred 380. Grate 381. Chop 382. Blend 383. Mix 384. Grind 385. Shred 386. Grate 387. Chop 388. Blend 389. Mix 390. Grind 391. Shred 392. Grate 393. Chop 394. Blend 395. Mix 396. Grind 397. Shred 398. Grate 399. Chop 400. Blend 401. Mix 402. Grind 403. Shred 404. Grate 405. Chop 406. Blend 407. Mix 408. Grind 409. Shred 410. Grate 411. Chop 412. Blend 413. Mix 414. Grind 415. Shred 416. Grate 417. Chop 418. Blend 419. Mix 420. Grind 421. Shred 422. Grate 423. Chop 424. Blend 425. Mix 426. Grind 427. Shred 428. Grate 429. Chop 430. Blend 431. Mix 432. Grind 433. Shred 434. Grate 435. Chop 436. Blend 437. Mix 438. Grind 439. Shred 440. Grate 441. Chop 442. Blend 443. Mix 444. Grind 445. Shred 446. Grate 447. Chop 448. Blend 449. Mix 450. Grind 451. Shred 452. Grate 453. Chop 454. Blend 455. Mix 456. Grind 457. Shred 458. Grate 459. Chop 460. Blend 461. Mix 462. Grind 463. Shred 464. Grate 465. Chop 466. Blend 467. Mix 468. Grind 469. Shred 470. Grate 471. Chop 472. Blend 473. Mix 474. Grind 475. Shred 476. Grate 477. Chop 478. Blend 479. Mix 480. Grind 481. Shred 482. Grate 483. Chop 484. Blend 485. Mix 486. Grind 487. Shred 488. Grate 489. Chop 490. Blend 491. Mix 492. Grind 493. Shred 494. Grate 495. Chop 496. Blend 497. Mix 498. Grind 499. Shred 500. Grate 501. Chop 502. Blend 503. Mix 504. Grind 505. Shred 506. Grate 507. Chop 508. Blend 509. Mix 510. Grind 511. Shred 512. Grate 513. Chop 514. Blend 515. Mix 516. Grind 517. Shred 518. Grate 519. Chop 520. Blend 521. Mix 522. Grind 523. Shred 524. Grate 525. Chop 526. Blend 527. Mix 528. Grind 529. Shred 530. Grate 531. Chop 532. Blend 533. Mix 534. Grind 535. Shred 536. Grate 537. Chop 538. Blend 539. Mix 540. Grind 541. Shred 542. Grate 543. Chop 544. Blend 545. Mix 546. Grind 547. Shred 548. Grate 549. Chop 550. Blend 551. Mix 552. Grind 553. Shred 554. Grate 555. Chop 556. Blend 557. Mix 558. Grind 559. Shred 560. Grate 561. Chop 562. Blend 563. Mix 564. Grind 565. Shred 566. Grate 567. Chop 568. Blend 569. Mix 570. Grind 571. Shred 572. Grate 573. Chop 574. Blend 575. Mix 576. Grind 577. Shred 578. Grate 579. Chop 580. Blend 581. Mix 582. Grind 583. Shred 584. Grate 585. Chop 586. Blend 587. Mix 588. Grind 589. Shred 590. Grate 591. Chop 592. Blend 593. Mix 594. Grind 595. Shred 596. Grate 597. Chop 598. Blend 599. Mix 600. Grind 601. Shred 602. Grate 603. Chop 604. Blend 605. Mix 606. Grind 607. Shred 608. Grate 609. Chop 610. Blend 611. Mix 612. Grind 613. Shred 614. Grate 615. Chop 616. Blend 617. Mix 618. Grind 619. Shred 620. Grate 621. Chop 622. Blend 623. Mix 624. Grind 625. Shred 626. Grate 627. Chop 628. Blend 629. Mix 630. Grind 631. Shred 632. Grate 633. Chop 634. Blend 635. Mix 636. Grind 637. Shred 638. Grate 639. Chop 640. Blend 641. Mix 642. Grind 643. Shred 644. Grate 645. Chop 646. Blend 647. Mix 648. Grind 649. Shred 650. Grate 651. Chop 652. Blend 653. Mix 654. Grind 655. Shred 656. Grate 657. Chop 658. Blend 659. Mix 660. Grind 661. Shred 662. Grate 663. Chop 664. Blend 665. Mix 666. Grind 667. Shred 668. Grate 669. Chop 670. Blend 671. Mix 672. Grind 673. Shred 674. Grate 675. Chop 676. Blend 677. Mix 678. Grind 679. Shred 680. Grate 681. Chop 682. Blend 683. Mix 684. Grind 685. Shred 686. Grate 687. Chop 688. Blend 689. Mix 690. Grind 691. Shred 692. Grate 693. Chop 694. Blend 695. Mix 696. Grind 697. Shred 698. Grate 699. Chop 700. Blend 701. Mix 702. Grind 703. Shred 704. Grate 705. Chop 706. Blend 707. Mix 708. Grind 709. Shred 710. Grate 711. Chop 712. Blend 713. Mix 714. Grind 715. Shred 716. Grate 717. Chop 718. Blend 719. Mix 720. Grind 721. Shred 722. Grate 723. Chop 724. Blend 725. Mix 726. Grind 727. Shred 728. Grate 729. Chop 730. Blend 731. Mix 732. Grind 733. Shred 734. Grate 735. Chop 736. Blend 737. Mix 738. Grind 739. Shred 740. Grate 741. Chop 742. Blend 743. Mix 744. Grind 745. Shred 746. Grate 747. Chop 748. Blend 749. Mix 750. Grind 751. Shred 752. Grate 753. Chop 754. Blend 755. Mix 756. Grind 757. Shred 758. Grate 759. Chop 760. Blend 761. Mix 762. Grind 763. Shred 764. Grate 765. Chop 766. Blend 767. Mix 768. Grind 769. Shred 770. Grate 771. Chop 772. Blend 773. Mix 774. Grind 775. Shred 776. Grate 777. Chop 778. Blend 779. Mix 780. Grind 781. Shred 782. Grate 783. Chop 784. Blend 785. Mix 786. Grind 787. Shred 788. Grate 789. Chop 790. Blend 791. Mix 792. Grind 793. Shred 794. Grate 795. Chop 796. Blend 797. Mix 798. Grind 799. Shred 800. Grate 801. Chop 802. Blend 803. Mix 804. Grind 805. Shred 806. Grate 807. Chop 808. Blend 809. Mix 810. Grind 811. Shred 812. Grate 813. Chop 814. Blend 815. Mix 816. Grind 817. Shred 818. Grate 819. Chop 820. Blend 821. Mix 822. Grind 823. Shred 824. Grate 825. Chop 826. Blend 827. Mix 828. Grind 829. Shred 830. Grate 831. Chop 832. Blend 833. Mix 834. Grind 835. Shred 836. Grate 837. Chop 838. Blend 839. Mix 840. Grind 841. Shred 842. Grate 843. Chop 844. Blend 845. Mix 846. Grind 847. Shred 848. Grate 849. Chop 850. Blend 851. Mix 852. Grind 853. Shred 854. Grate 855. Chop 856. Blend 857. Mix 858. Grind 859. Shred 860. Grate 861. Chop 862. Blend 863. Mix 864. Grind 865. Shred 866. Grate 867. Chop 868. Blend 869. Mix 870. Grind 871. Shred 872. Grate 873. Chop 874. Blend 875. Mix 876. Grind 877. Shred 878. Grate 879. Chop 880. Blend 881. Mix 882. Grind 883. Shred 884. Grate 885. Chop 886. Blend 887. Mix 888. Grind 889. Shred 890. Grate 891. Chop 892. Blend 893. Mix 894. Grind 895. Shred 896. Grate 897. Chop 898. Blend 899. Mix 900. Grind 901. Shred 902. Grate 903. Chop 904. Blend 905. Mix 906. Grind 907. Shred 908. Grate 909. Chop 910. Blend 911. Mix 912. Grind 913. Shred 914. Grate 915. Chop 916. Blend 917. Mix 918. Grind 919. Shred 920. Grate 921. Chop 922. Blend 923. Mix 924. Grind 925. Shred 926. Grate 927. Chop 928. Blend 929. Mix 930. Grind 931. Shred 932. Grate 933. Chop 934. Blend 935. Mix 936. Grind 937. Shred 938. Grate 939. Chop 940. Blend 941. Mix 942. Grind 943. Shred 944. Grate 945. Chop 946. Blend 947. Mix 948. Grind 949. Shred 950. Grate 951. Chop 952. Blend 953. Mix 954. Grind 955. Shred 956. Grate 957. Chop 958. Blend 959. Mix 960. Grind 961. Shred 962. Grate 963. Chop 964. Blend 965. Mix 966. Grind 967. Shred 968. Grate 969. Chop 970. Blend 971. Mix 972. Grind 973. Shred 974. Grate 975. Chop 976. Blend 977. Mix 978. Grind 979. Shred 980. Grate 981. Chop 982. Blend 983. Mix 984. Grind 985. Shred 986. Grate 987. Chop 988. Blend 989. Mix 990. Grind 991. Shred 992. Grate 993. Chop 994. Blend 995. Mix 996. Grind 997. Shred 998. Grate 999. Chop 1000. Blend 1001. Mix 1002. Grind 1003. Shred 1004. Grate 1005. Chop 1006. Blend 1007. Mix 1008. Grind 1009. Shred 1010. Grate 1011. Chop 1012. Blend 1013. Mix 1014. Grind 1015. Shred 1016. Grate 1017. Chop 1018. Blend 1019. Mix 1020. Grind 1021. Shred 1022. Grate 1023. Chop 1024. Blend 1025. Mix 1026. Grind 1027. Shred 1028. Grate 1029. Chop 1030. Blend 1031. Mix 1032. Grind 1033. Shred 1034. Grate 1035. Chop 1036. Blend 1037. Mix 1038. Grind 1039. Shred 1040. Grate 1041. Chop 1042. Blend 1043. Mix 1044. Grind 1045. Shred 1046. Grate 1047. Chop 1048. Blend 1049. Mix 1050. Grind 1051. Shred 1052. Grate 1053. Chop 1054. Blend 1055. Mix 1056. Grind 1057. Shred 1058. Grate 1059. Chop 1060. Blend 1061. Mix 1062. Grind 1063. Shred 1064. Grate 1065. Chop 1066. Blend 1067. Mix 1068. Grind 1069. Shred 1070. Grate 1071. Chop 1072. Blend 1073. Mix 1074. Grind 1075. Shred 1076. Grate 1077. Chop 1078. Blend 1079. Mix 1080. Grind 1081. Shred 1082. Grate 1083. Chop 1084. Blend 1085. Mix 1086. Grind 1087. Shred 1088. Grate 1089. Chop 1090. Blend 1091. Mix 1092. Grind 1093. Shred 1094. Grate 1095. Chop 1096. Blend 1097. Mix 1098. Grind 1099. Shred 1100. Grate 1101. Chop 1102. Blend 1103. Mix 1104. Grind 1105. Shred 1106. Grate 1107. Chop 1108. Blend 1109. Mix 1110. Grind 1111. Shred 1112. Grate 1113. Chop 1114. Blend 1115. Mix 1116. Grind 1117. Shred 1118. Grate 1119. Chop 1120. Blend 1121. Mix 1122. Grind 1123. Shred 1124. Grate 1125. Chop 1126. Blend 1127. Mix 1128. Grind 1129. Shred 1130. Grate 1131. Chop 1132. Blend 1133. Mix 1134. Grind 1135. Shred 1136. Grate 1137. Chop 1138. Blend 1139. Mix 1140. Grind 1141. Shred 1142. Grate 1143. Chop 1144. Blend 1145. Mix 1146. Grind 1147. Shred 1148. Grate 1149. Chop 1150. Blend 1151. Mix 1152. Grind 1153. Shred 1154. Grate 1155. Chop 1156. Blend 1157. Mix 1158. Grind 1159. Shred 1160. Grate 1161. Chop 1162. Blend 1163. Mix 1164. Grind 1165. Shred 1166. Grate 1167. Chop 1168. Blend 1169. Mix 1170. Grind 1171. Shred 1172. Grate 1173. Chop 1174. Blend 1175. Mix 1176. Grind 1177. Shred 1178. Grate 1179. Chop 1180. Blend 1181. Mix 1182. Grind 1183. Shred 1184. Grate 1185. Chop 1186. Blend 1187. Mix 1188. Grind 1189. Shred 1190. Grate 1191. Chop 1192. Blend 1193. Mix 1194. Grind 1195. Shred 1196. Grate 1197. Chop 1198. Blend 1199. Mix 1200. Grind 1201. Shred 1202. Grate 1203. Chop 1204. Blend 1205. Mix 1206. Grind 1207. Shred 1208. Grate 1209. Chop 1210. Blend 1211. Mix 1212. Grind 1213. Shred 1214. Grate 1215. Chop 1216. Blend 1217. Mix 1218. Grind 1219. Shred 1220. Grate 1221. Chop 1222. Blend 1223. Mix 1224. Grind 1225. Shred 1226. Grate 1227. Chop 1228. Blend 1229. Mix 1230. Grind 1231. Shred 1232. Grate 1233. Chop 1234. Blend 1235. Mix 1236. Grind 1237. Shred 1238. Grate 1239. Chop 1240. Blend 1241. Mix 1242. Grind 1243. Shred 1244. Grate 1245. Chop 1246. Blend 1247. Mix 1248. Grind 1249. Shred 1250. Grate 1251. Chop 1252. Blend 1253. Mix 1254. Grind 1255. Shred 1256. Grate 1257. Chop 1258. Blend 1259. Mix 1260. Grind 1261. Shred 1262. Grate 1263. Chop 1264. Blend 1265. Mix 1266. Grind 1267. Shred 1268. Grate 1269. Chop 1270. Blend 1271. Mix 1272. Grind 1273. Shred 1274. Grate 1275. Chop 1276. Blend 1277. Mix 1278. Grind 1279. Shred 1280. Grate 1281. Chop 1282. Blend 1283. Mix 1284. Grind 1285. Shred 1286. Grate 1287. Chop 1288. Blend 1289. Mix 1290. Grind 1291. Shred 1292. Grate 1293. Chop 1294. Blend 1295. Mix 1296. Grind 1297. Shred 1298. Grate 1299. Chop 1300. Blend 1301. Mix 1302. Grind 1303. Shred 1304. Grate 1305. Chop 1306. Blend 1307. Mix 1308. Grind 1309. Shred 1310. Grate 1311. Chop 1312. Blend 1313. Mix 1314. Grind 1315. Shred 1316. Grate 1317. Chop 1318. Blend 1319. Mix 1320. Grind 1321. Shred 1322. Grate 1323. Chop 1324. Blend 1325. Mix 1326. Grind 1327. Shred 1328. Grate 1329. Chop 1330. Blend 1331. Mix 1332. Grind 1333. Shred 1334. Grate 1335. Chop 1336. Blend 1337. Mix 1338. Grind 1339.

Mrs. Agnes H. Sooy, 70;

A Mass was offered at for Agnes H. Sooy, 70, Shore Medical Center, St. Peter's Church Jan. 13 who died Jan. 10 at Jersey, Neptune.

Mrs. Sooy lived most of her life in Belleville before moving to West Belmar nine years ago.

Surviving are her husband, Everett; a son, Joseph of Denville; a sister, Mrs. Margaret Flynn of West Belmar, and three grandchildren.

Arrangements were made by the Kiernan Funeral Home. Interment was in St. Peter's Cemetery.

ROLLER SKATING PARTIES

of all kinds
AVAILABLE
Mon. thru Sun.

PUBLIC SESSIONS
Sat., Sun. & Holidays
7 to 9 P.M.
Tues. Thru Sun. 10:30
to 12:30 P.M.
Wed. Afternoons
2:30 to 5:00 P.M.

LIVINGSTON ROLLER RINK
615 So. Livingston Ave.
Livingston, N.J.
992-6161 or 482-9416



Senior Notes

By GEORGE CHENOWETH

A group of Belleville senior citizens appeared at the Administrative Offices of the Essex County Park Commission, 115 Clifton Avenue, Newark on Friday of last week. Their reason for being there was to protest the closing of the Belleville Avenue Clubhouse in the Park. John Tucker and Thomas Carney represented the group and acted as spokesmen. It was not practical, it was stated, to renovate the building and build and addition to it and then close it. It was decided that it was unconscionable to deprive the seniors of their meeting hall and recreational area. We realize that in the new county budget funds for most all services have been cut back on a large economic program. But we also realize that this building is used by seniors for meetings three days a week and for recreational activities almost every day from early morning until dark. The people of the community have come to depend on the building being open for their social needs and physical well being and they look forward to the meetings with their friends at the site. If there is any intent to close the building, we ask the Essex County Park Commission to reconsider. Don't hurt the older people, cut back on other programs, but let the elderly enjoy the years that they have left.

Crime against the elderly is on the upsurge. There is hardly a day goes by but what we read about assaults, muggings, murders, robberies, and even rape against senior citizens. Murder is not uncommon anymore and it calls for drastic steps to try to prevent or lessen any and all of the crimes mentioned above. The ideal solution, of course would be the prevention of all crime and it will never happen that this will come about, entirely. The next best thing is to be prepared against crime, we speak of some of the methods that the Essex County Sheriff's Department advocate to alleviate the situation where crime occurs. The Department has films depicting the best ways for the elderly to protect themselves and their homes against the criminal. Seniors groups interested in such a program can contact the Essex County Sheriff's Office. What is learned from the program could be a deterrent against crime not only for senior citizens but for everyone.

Belleville students enjoy trips to far-away places

Four Belleville residents from Montclair State College enjoyed extensive excursions during the past three week Winter Session.

Esther C. Krom, of 90 Bell St. toured the "World of Architectural Treasures" in Egypt. Donna Palumbo, of 7 Gregory Terr. had the same objective as she toured through Spain.

Regina Macioci, of 58 Frederick St. took a look at "Literary England," led by Dr. Rita Jacobs of the English Department. And John Trento, of 201 Fairway Ave. observed a bit of British theater un-

der the direction of Dr. Clyde McElroy, speech and theater department.

JACK & JILL Montessori

DAY NURSERY • Preschool • Kindergarten

- Ages-5 mos.-6 yrs.
- Open-7:30 am-5:30 pm
- Open Year Round
- State Certified
- Montessori Trained Staff
- Enrollment-2, 3, & 5 Day
- Full or * Day
- Ed-Dir. Rosemary Stark M.A. (Ed) Mont. Dip. (London A.M.S.) • Call 743-6896
- B.C. Kar Mont Dip (AMI) P.B.T.C. (IMDIA) Dip G. Art.

Affiliated With
Academy Montessori International

HOUSE OF THE WEEK



A LOVE STORY

Once upon a time we found a home for you. A lovely home. A perfect home. A home with such nice touches as full insulation and stainless siding. A mother/daughter home with separate entrances. Call us today and find out how. In our love story, you can live happily ever after.



Wayne K. Thomas Realty
277 Broad Street
Bloomfield, New Jersey 07003
429-7400

"Each Office Independently Owned & Operated"

DON'T MOVE... IMPROVE!

LAZUR'S
HOME IMPROVEMENT
CENTER

SPECIALISTS IN BATH & KITCHEN REMODELING

- ALTERATIONS
- ALUMINUM SIDING
- GUTTERS & LEADERS
- ATTIC ROOMS
- KITCHENS
- BASEMENTS
- BATHROOMS
- ALUMINUM STORM WINDOWS
- ROOFING
- GARAGES
- DORMERS

BIG SAVINGS ON ORDERS PLACED BEFORE FEB. 15

- Fully Insured
- Workmanship Guaranteed
- Financing Arranged

CUSTOM BUILDERS FOR OVER 20 YEARS

Call **667-6940**
234 FRANKLIN AVE., NUTLEY, N.J.

PAUL VI REGIONAL HIGH SCHOOL

775 Valley Road, Clifton, N.J. 07013

ACCEPTING REGISTRATIONS

Registrations — February 10, 1979
from 9:00 AM - 1:00 PM

Are you looking for a school which seeks to develop the moral, intellectual, social, culture, and physical abilities of your child? Paul VI offers complete preparatory and business programs in a pleasant, friendly and Christian atmosphere. Full extra-curricular and athletic programs — Admission open to all qualified students.

ACCREDITED:
Middle States Association
of Colleges and Secondary
Schools
New Jersey State
Department of Education

INQUIRES:
Sister Judith Foloky, O.P., M.A.
(201) 472-1775

HAIRCUTS & STYLING FOR MEN & WOMEN

THE CLASSIC IMAGE

236 Franklin Avenue
Nutley 667-2032

WIN FREE GIFTS

Hairdryers - Curling Irons
and Much More
Come in or call for details

WINTER SPECIALS

Frostings.....\$22
Touch-Ups (Mon.- Wed.) \$12
Uniperm & Haircut.....\$25
(Mon. - Wed.)

Early Bird Appointments from 8 a.m.
Open Mon. thru Sat. Late Nite Fri.

MANNINGS
229 BELLEVILLE AVE. NUTLEY, N.J.

**LOST OUR LEASE
GOING OUT OF BUSINESS
SALE STARTS FEBRUARY 1**

LEVI'S Straight Leg Pre-Wash \$11⁹⁹	HIGH FASHION Denim and Cords Reg. *20.00 to *40.00 50% OFF	WOOLRICH JACKETS. Down Vests Down Jackets Wool Shirts up to 30% OFF	FLANNEL SHIRTS In Plaid Small to X Large Reg. *12.00 \$8⁹⁷
CHAMOIS SHIRTS Reg. *14.00 \$9⁹⁷	SNEAKERS Adidas Sneakers Puma Sneakers Reg. *15.00 to *35.00 25% OFF	THERMAL UNDERWEAR Men's & Women's Tops & Bottoms Reg. *5.00 \$3⁹⁷	COMPLETE BOY'S DEPT. ON SALE Sweaters - Shirts Pants Levi-Cords & Overalls FRYE BOOTS

CLEARANCE SALE

50% OFF ALL PATTERNS

BUTTERICH
VOGUE

SIMPLICITY
MC CALLS

All Sizes Not In Stock

CLOSE OUT ON
NOTIONS

30% OFF

FIBRE GLASS
CURTAIN FABRIC

59¢ YD. 45" WIDE

CLOSE 99¢ OUT

COTTON BLENDS
NYLON

45" WIDE

SOLIDS & PRINTS
RAYON CHALLIE

30% OFF
ON ALL OTHER MERCHANDISE
Come In And Save

The Fabric Shoppe

386 FRANKLIN AVENUE
NUTLEY

OPEN DAILY 10 A.M. - 5 P.M.
CLOSED SUNDAY

LOCATED DIAGONALLY ACROSS FROM SHOP RITE

classified

New Direct Line
667-3000
OR/759-3200

CLASSIFIED ADVERTISEMENTS ARE PUBLISHED IN BOTH SUNBANK NEWSPAPERS

THE NUTLEY SUN **THE BELLEVILLE TIMES**

RATES EFFECTIVE APRIL 1, 1978

MINIMUM 15 WORDS FOR 10¢
INCH RATES PER COL. INCH
ONE INCH OR MORE \$5.00
TWO INCHES OR MORE \$4.50
FIVE INCHES OR MORE \$4.00
OVER TEN INCHES \$3.00

ASK ABOUT DISPLAY DISCOUNT RATE FOR INSERTIONS RUNNING 26 WEEKS
DEADLINE FOR SPACE COPY AND MATERIAL - 12 NOON TUESDAY

667-3000 759-3200

USE LIST BELOW FOR QUICK REFERENCE:

ANNOUNCEMENTS
AUTOMOBILES
AUTO PARTS & SUPPLIES
AUTO SERVICE
AUTO WRECKERS
CAMPER & TRUCKS
MOTORCYCLES

BUSINESS SERVICES
ACCOUNTING & TAX
AIR COND. & REFRIG.
CLEANING & DYING
CONSTRUCTION
DRIVEWAYS
ELECTRICIANS
EXTERMINATORS
FENCES
FLOOR SERVICE
HOME IMPROVEMENTS
INSURANCE
JUNK DEALERS
LANDSCAPING
LIQUORINE SERVICE
MASTERY
MISC. SERVICES
MOVING & STORAGE

Be Wise - Advertise

The coupon below is for your convenience in placing a minimum size ad to run in the Classified Section of the Nutley Sun & Belleville Times News.

DEADLINE - Tuesday 12 Noon.

Name _____ Address _____ City _____ State _____ Zip _____
Phone _____ Amount Enclosed _____
Date Desired _____ Classification _____

Minimum Rate is up to 15 words for 10¢. Each additional word 20¢. 5-7 average size words per line. Phone number counts as 1 word.

Make check or money order payable to Nutley Sun, 777 Bloomfield Ave., Nutley, N.J. 07110.

For Additional Information, Call 667-3000 or 759-3200

ANNOUNCEMENTS **ANNOUNCEMENTS**

FREE PAINTING
It's outstanding how inexpensive it is to decorate your home with genuine oil paintings. Sizes from 8x10 to 24x36. We hold in-home group presentations of original art. Sponsoring a presentation can mean the framed painting of your choice absolutely free.

Call 748-3912

IT'S MAGIC
A Delightful Show For The Whole Family!
A MUST FOR BLUE & GOLD DINNERS!
For information, call 759-3453 or 759-4857 Randy Jones Productions

HONEY BEE
TO TRAILWAYS LUXURIOUS BUS
Proudly Presents RESORTS INTERNATIONAL CASINO CARAVAN
Deluxe Package \$15
Leave Nutley 8:30 am. Leave Atlantic City 9:30 am. Visit Service, Mon. thru Fri.
CONTINENTAL BREAKFAST served on bus.
COCKTAIL REVENUE SHOW
Main Fl. Tax & Grat. Incl.
Gentlemen must wear picket!
LOTS OF FUN & EXCITEMENT!
FEB. 5, 12, 15, 22 & MORE
For reservations, please call Honey Bee 751-4578 or 751-1882
"You Will Be So Happy You'll Cried, Promise!"
HONEY TORT, Your Hostess

BUS RIDE
To Philadelphia
Sat. 3 pm. Sun. 11 am.
ATLANTIC CITY BUS, Feb. 4 \$15 per person.
LAS VEGAS TRIP, March 29-April 1 BIG GAMES, Feb. 10 & March 18
Call: "KATHY" 751-6364 or 751-6249

BANNER-PULIERI MOTORS, INC.
(Formerly Ray Cateno's)
397 Kearny Ave., Kearny
997-2600
1977 LINCOLN, 4 door town car. Fully loaded, black with black padded vinyl top, velour interior, 33,000 miles. Showroom Condition.
1973 CAMARO LT, V8, P/S, R/R, console bucket seats, A/C, Rally wheels, 51,200 miles. Excellent Condition!
1974 FORD LTD BROUGHAM, 4 door sedan, baby blue with blue vinyl top & cloth interior, V8, auto, P/S, "chrome" controls, 42,000 miles. \$3995. Excellent Condition! Bank Financing Available. ALL CARS 100% GUARANTEED

1978 CADILLAC COUPE
Firemist gold. Velour up-holstery. One owner. 17,000 + miles. Electric. \$5995 firm. Call after 3:30 P.M. 759-0542 Quick Sale

Cash will drive it away.

1954 OLDS SUPER 88 Excellent condition. 29,000 original miles. Asking \$4500. Call 759-6809.

1974 FORD GRAN TORINO. Fully equipped. Excellent condition. Please call 667-4610.

AUTOMOTIVE

1977 MONZA
Town Coupe
Further with saddle loupou and interior. 4 speed, 4 cyl. 9,000 miles. A/C, stereo, 8 track. Excellent condition. Asking \$5500 or best offer. Call 667-9009

our low prices are no fairy tale.
BOOK BUICK
667-3000

1973 PLYMOUTH FURY
Auto
R&H
A/C
63,000 miles
\$1100.
GOOD RUNNING CAR
CALL 325-3524

AUTO PARTS & SUPPLIES
MODERN AUTO PARTS
Open 7 Days
SUNDAY: 10-1 p.m.
PARTS • PAINTS
• MACHINE SHOP
"Mechanic on duty 7 days"

DISCOUNT PRICES!
82 RUTGERS ST. BELLEVILLE
759-5555

FOR COMPLETE LIST OF
• AUTO PARTS
• TIRES
• ACCESSORIES
IT'S
CAR CARE
45-48 Franklin Ave., Nutley
667-3992
CAR CARE EXCLUSIVE DRIVE-IN
INSTALLATION CENTER
AUTO SERVICE
• BODY WORK • PAINT FRAMEWORK
TOWING
RIVERIDE BODY & FENDER WORKS
221 Van Dyke St., Belleville
759-1162

Kirk's Automatic Transmission
"Customers are our salesmen."
One of the most reputable and finest transmission specialist shops in the area.

FREE ESTIMATES
ONE DAY SERVICE
ALL WORK DOMESTIC AND FOREIGN
998-9666
20 RIVER ROAD, N.J.
on Belleville Pike
N. ARINGTON, N.J.
• AUTO WRECKERS
FRANKIE'S TOWING
24 Hour Service
Junks Wanted
Cars, Trucks, etc.
"Highest Prices Paid"
Call 667-2192

BILL'S AUTO WRECKERS
\$30 AND UP FOR CARS OR TRUCKS
ANY CONDITION
Belleville Pike, Mo. Arlington
998-0966 471-9081

201-991-0180

FREE TELETYPE SERVICE
MEADOWLANDS AUTO WRECKERS
BUYERS OF JUNK CARS & SELLERS OF USED AUTO PARTS
RICHIE GALLO PRES.
Belleville Tpk. N. Arlington
NORTH LINDEN

DO YOU HAVE A USED OR WRECKED CAR OR TRUCK TO SELL?
If you do, call us and we'll buy it! On the spot cash and immediate pickup available.
Bryan's Auto Wreckers
344-3113 between Van-Span

BUSINESS SERVICES

ACCOUNTING & TAX
FINANCIAL COUNSELING
Are you satisfied with the way you handle your family income?
Do you need help budgeting your money/keeping your checkbook?
25 Years Experience/Personal Friendly Help Available To You
Call 667-6670 after 7pm

INCOME TAX
All returns prepared at your home. Call
TACS CONSULTANTS
845-7581

INCOME TAX SERVICE
Federal & State Income Tax professionally prepared in your own home. General bookkeeping services also available.
For appointment call 667-3014

FEDERAL & STATE TAX RETURNS PREPARED
Call 235-1049 for appointment

BATHROOMS & KITCHENS
RESURFACE YOUR PRESENT CABINETS
ALSO NEW FORMICA CABINETS
279-6653 and 843-2605

CARPENTERS & BUILDERS
CARPENTER-BUILDER
POUCHES-STAIRS REPAIR & REPAIRS
PANELING-SHEDROCKING
CEILING-WINDOWS
GENERAL REPAIRS-DOORS
ADDITIONS & DORMERS
WOODEN PATIO DECKS
WOODEN SHEDS
PAINTING-ROOFING
FREE ESTIMATES
REASONABLE RATES
CALL BOB SMITH
Home Improvements
743-4876 379
743-2989 after 6P.M.

PETRELLA CONTRACTING
Established in 1912
Asphalt Driveways
Paving Lots
Excavating-Masonry Work
Free Estimates
Call 284-0600

CARPENTERS & BUILDERS
25 YEARS EXPERIENCE
GENERAL REPAIRS
NO JOB TOO SMALL
751-3115

EXPERT BUG & UPHOLSTERY CLEANING
Steam extraction method.
CALL BOB ZULLO
481-1209

HOFFMAN'S STEAM CARPET CLEANING
Residential Free Estimates
Call BERT 284-0361
37 Chase St., Nutley
INDUSTRIAL MAT SAT

CARPETING & SERVICE
Can be one of the major causes of structural damage to your home and you may not know you have a termite infestation for years.
LET US HELP YOU PROTECT YOUR INVESTMENT
FREE INSPECTION with verbal report or estimate. WARRANTY available.
Fully insured & licensed in N.J.

LEMING EXTERMINATORS
675-8516

CARPETING & SERVICE

BUSINESS SERVICES

CARPETING & SERVICE
MAT RENTALS
FLOOR WAXING
RUG CLEANING
JUG CLEANING
OFFICE MAINT.

NORTH JERSEY MAINTENANCE
Complete Janitorial Service
Commercial or Residential
MICHAEL CAPONE
667-8341
256-5663 Alt. 6 p.m.

CHIMNEY SERVICE & REPAIR

FIREPLACE & CHIMNEY CLEANING
Keep Your Chimney Safe!
We promise no mess!
CHIMNEY KING
753-1056
Ask About Our Neighborhood Discount

ELECTRICIANS
D & D ELECTRIC
58 Belleville Ave.
Belleville - 751-2782
Lic. #270 4/26

BELLO'S ELECTRIC SERVICE
COMPLETE HOME WIRING
WE SPECIALIZE IN
100 AMP. 220 LINE
FREE ESTIMATE
CALL ANYTIME
667-0919 1/21
Insurance Estimates Optional

DE LUZO ELECTRICAL CONTRACTING, INC.
Industrial • Commercial • Residential
No job too small or too far.
FREE ESTIMATE
CALL 661-2937
License #4801 5/31

ANDERSON ELECTRICAL CONTRACTING
Lic. B.P. No. 3220
Residential & Commercial
Services
Convenience-Lighting outlets
Washer-Dryer Lines
Security Lighting-Repairs
CALL 748-2554
For Safety...
Dependability... Service

EXTERMINATORS

TERMITES
\$175
• ANY HOUSE
• ANY SIZE
10 YEAR GUARANTEE
641-4722
GARDEN STATE EXTERMINATORS
FLOOR SERVICE

SHAMPOOING
• SHAGS
• FLOOR WAXING
• RUGS
• SHAMPOOING
• Bob Berninger
667-1121

FLOORS
SAND & REFINISHED
• SHAGS
• American Floor
Sanding Co.
George Ingold 667-5887

STAR
FLOOR WAXING
COMMERCIAL & RESIDENTIAL
759-3098
Call Frank after 4 P.M.

HOME IMPROVEMENTS
JIM LUONGO HOME IMPROVEMENTS
• Aluminum Siding
• New Bathrooms
• Modern Kitchens & Additions
• Roofing • Dormers
• Basements Remodeling
FREE ESTIMATES 661-3210

General Contractor
Specializing in
• KITCHENS
• BATHROOMS
• EXTENSIONS
• PLUMBING • ROOFING
• PANELING • WINDOWS
• CEILING • ATTICS
• SIDING
• BASEMENTS
We sell and do our own work
No middleman 3/29

OVERHEAD GARAGE DOORS
• Replaced • Installed
ELECTRIC DOOR OPENERS
• Sales • Installation
McDANIEL ENTERPRISES
667-4976 2/8

GENERAL CONTRACTORS
"Specialists in Remodeling"
Residential & Commercial
COMPLETE SERVICE
Masonry & Carpentry
372-7294

ROOFING GUTTERS
• SIDING • TRIM • SHILLS
• STORM WINDOWS
DOORS Free Estimate
CALL BOB 751-4153

TONY NICOSIA & SONS
Alterations Specialist
• Kitchens • Bathrooms
• Rooms Additions
Also Masonry Work
• Stoops • Sidewalks
• Retaining Walls
751-0743

CARPETING & SERVICE

BUSINESS SERVICES

EXTERMINATORS

TERMITES
\$175
• ANY HOUSE
• ANY SIZE
10 YEAR GUARANTEE
641-4722
GARDEN STATE EXTERMINATORS
FLOOR SERVICE

SHAMPOOING
• SHAGS
• FLOOR WAXING
• RUGS
• SHAMPOOING
• Bob Berninger
667-1121

FLOORS
SAND & REFINISHED
• SHAGS
• American Floor
Sanding Co.
George Ingold 667-5887

STAR
FLOOR WAXING
COMMERCIAL & RESIDENTIAL
759-3098
Call Frank after 4 P.M.

HOME IMPROVEMENTS
JIM LUONGO HOME IMPROVEMENTS
• Aluminum Siding
• New Bathrooms
• Modern Kitchens & Additions
• Roofing • Dormers
• Basements Remodeling
FREE ESTIMATES 661-3210

General Contractor
Specializing in
• KITCHENS
• BATHROOMS
• EXTENSIONS
• PLUMBING • ROOFING
• PANELING • WINDOWS
• CEILING • ATTICS
• SIDING
• BASEMENTS
We sell and do our own work
No middleman 3/29

OVERHEAD GARAGE DOORS
• Replaced • Installed
ELECTRIC DOOR OPENERS
• Sales • Installation
McDANIEL ENTERPRISES
667-4976 2/8

GENERAL CONTRACTORS
"Specialists in Remodeling"
Residential & Commercial
COMPLETE SERVICE
Masonry & Carpentry
372-7294

ROOFING GUTTERS
• SIDING • TRIM • SHILLS
• STORM WINDOWS
DOORS Free Estimate
CALL BOB 751-4153

TONY NICOSIA & SONS
Alterations Specialist
• Kitchens • Bathrooms
• Rooms Additions
Also Masonry Work
• Stoops • Sidewalks
• Retaining Walls
751-0743

CARPETING & SERVICE

BUSINESS SERVICES

HOME IMPROVEMENTS

CUSTOM ALTERATIONS
• Kitchens • Bathrooms
• Basements • Ceiling
• Masonry • Roofing
Quality Work at Reason. Prices.
Free Estimates
Call "DOM" 667-9654

RAILINGS
Belleville
Wrought Iron Corp
751-5341

RAILINGS
BLOOMFIELD IRON CO.
21 Florence Ave.
Belleville
INSIDE & OUTSIDE
TAILINGS
CUSTOM MADE COLUMNS
& WINDOW GUARDS
HOT LEAD INSTALLED
THE OLD WAY
CALL 748-7040

INSURANCE
BUSINESS INSURANCE
• Package Discounts
• Boiler & Machinery
• Plane Glass
• Flood Coverage
BROUILLARD INS. AGCY
188 Chestnut St., Nutley
667-2900

JUNK DEALERS

F. CONSTANTINO & SONS
"We Pick Up"
• Paper • Rags • Metal
• Mattresses • Sinks
• Bathtubs • Furnaces
• Clean Cellars
759-2612

RECYCLE
• ALL NEWSPAPERS
• MAGAZINES
• BRASS
• COPPER
• ALUMINUM
HIGHEST PRICES PAID!
ALLIED WASTE INC.
61 Midland Ave., Wallington
473-7638

ATTENTION
TOP PRICES FOR
JUNK CARS & TRUCKS
Copper, Brass, Lead Batteries,
Aluminum, Newspapers. 80¢
per 100 lbs.
J. RESCINTI 759-4408
42-44 Clinton St., Belleville

BRING IT IN!
Copper, Brass, Aluminum,
Lead, Batteries, Cool Iron,
Steel, Paper.
KEARNEY SCRAP METAL
478 Schuyler Ave., Kearny
TOP PRICES! 991-0432

LANDSCAPING
AL'S TREE SERVICE
TRIMMING & REMOVAL
OF ALL SIZE TREES.
FREE ESTIMATES
CALL 939-6670

LIMOUSINE SERVICE
BOB CASSIE LIMOUSINE SERVICE
• AIRPORTS • PIER
• WEDDINGS • PROMS
• SHOWS
CALL 661-1329

MASONRY
A. LOMBARDI & SONS
Specializing in
• BRICK WORK • BLOCK WORK
• CONCRETE WORK
FREE ESTIMATES
ALL WORK GUARANTEED
CALL 436-2696 OFFICE
751-6631 EVENINGS

SIDEWALKS • STEPS
• DRIVEWAYS
• RETAINING WALLS
Replaced/Rebuilt
No Job Too Small
242-3593 242-0090
DAYS EVES

BUSINESS SERVICES

MISC. SERVICES

RUBBISH REMOVAL
• Basements • Cellars
• Attics • Garages • Yards
We Clean Everything
From A to Z

B & J TRUCKING
759-8981

HOOKER'S WELDING
Truck racks made to order.
Trailer hitches installed. Bicycles, motorcycles, lawn mowers, house & office chairs fromed welded.
Call 939-0055

T & W WASTE REMOVAL
ALSO FURNITURE MOVING
• NO JOB TOO SMALL
• REASONABLE RATES
CALL ANYTIME
546-4251 523-8831

WHITE OAK HOME REPAIRS
Alum. Storm Windows & Doors.
Replacement Windows.
Overhead Garage Doors.
Replaced & Installed.
No Commission, No Salesmen
759-5580 or 661-0425
"CALL US SAVE"

SHOE REPAIRING
Wash & Sew
• Handbag Repairing
• Shoe Repairing
667-8964

PLAZA BOOTERY
483 Franklin Ave., Nutley
667-8964

WE REPAIR
• Washers • Dryers
• Refrigerators
• Freezers
• Air Conditioners
E. CROSSLEY SERVICE
667-9278

PAINTING
Interior
Free Estimates
ED STEELLY
759-7756

INTERIOR SPECIALIST!
Painting
Paperhanging
Call "BRIAN"
661-1165

PAINT NOW
"Before the Holidays"
Interior • Exterior
By Professionals
997-1015

PAINTING
Interior • Exterior
Light Carpentry Work
Estimates Carefully Given
(INSURED) 751-4881

PETE'S PAINTING
Interior & Exterior
Light Carpentry Work
Estimates Carefully Given
(INSURED) 751-4881

J. KEIFFER PAINTING & WALLPAPER
INTERIOR & EXTERIOR
FREE ESTIMATES
FULLY INSURED
CALL 485-6357

FRANK RUMEO
Painting/Decorator/
Paperhanging
Free Estimate
No Job Too Small
Fully Insured
998-7046
European Craftsmen

PROFESSIONAL PAPERHANGING & PAINTING
Free Estimate • Fully Insured
Reasonable & Reliable
Satisfaction Guaranteed.
775-5658 473-7219

PAINTER/HANDYMAN
"I'll do anything for you!"
• Int. & Ext. Painting
• Home Repairs
• Odd Jobs
MISTER J. 667-1494
Int. & Ext. 3/8

VICTOR TIRONDOLA
Painting Contractor
Interior & Exterior
• PAINTING
• GENERAL REPAIRS
Closets
Roofs, Leaks & Outlets.
Also Some Carpentry Work.
667-1893

PLUMBING & HEATING
METERED FUEL OIL & KEROSENE DELIVERIES
BURNERS CLEANED & SERVICED.
JOHN C. DOBROWOLSKI
1/4 ARISTOTON FUEL OILS
991-1351

MOVING & STORAGE
A & J COSTELLO
MOVING SERVICES INC.
Reasonable Rates
991-868e
NJ PM #79

BUSINESS SERVICES

PLUMBING & HEATING

WINDHEIM

PLUMBING-HEATING
418 Franklin Ave., Nutley
• GAS HEAT
• HOT WATER HEATERS
• DISPOSALS
• DISHWASHERS
• MODERNIZING
BATHROOMS - KITCHENS
667-6886 3/21

FUEL CO FUEL OIL

C.O.D. 48.5 C.O.D.
MINIMUM 200 GALLONS
24 HOUR
BURNER SERVICE
748-7011 6/21

RECREATION

SUN GLO CORP.

ITALIAN BOCCIE BALLS
BILLIARDS RECREATIONAL
SHOOTING ARCHERY
ACCESSORIES
DOMESTIC & IMPORTED
GENUINE BELGIAN BALLS
111 Hackett St., Belleville
759-4474 2/28

ROOFING & SIDING

STEVEN J. LENAHAN INC.

ROOFING
Insured
429-7938 2/11

HARRISON & SON

OVER 50 YEARS
Industrial - Residential
Commercial
HOT ASPHALT ROOFING
"SPECIALISTS"
Shingles - Slate
Gutters & Leaders
991-3319 3/28

DON LUBY

ROOFING
Free Estimate
Leaders & Gutters
991-3319 3/28

BUSARDO ROOFING CO.

Roofing-Seamless Gutters
Leaders & Chimney W-C
Fully Insured - Reasonable
NO JOB TOO SMALL 3/8
Call Anytime! 471-0417
or after 3 p.m. 748-7330

HI-LO ROOFING CO.

667-4490 NUTLEY
Install hot air roofs,
shingles, leaders & gutters. Fully
insured. All work guaranteed.
Free estimates. Free estimates.
domestic & residential. 4/13

PLUMBING & HEATING

14 New Street
Belleville
KEEP YOUR PLUMBING YOUNG
J.G. YOUNG & SONS INC.
PLUMBING & HEATING
Stay Home 2348 & 8900
KITCHEN & BATHROOMS REMODELED
AUTOMATIC FIRE SPRINKLER SYSTEMS
Gas Heat, Hot Water Heaters, Elec. Sewer Cleaning
Residential - Commercial - Industrial
Repairs, Alterations, New Construction 3/8

G.P. RUSSELL CONSTRUCTION

"Complete Plumbing & Heating"
License #2821
• Additions • Bathrooms
• Dormers • Basements
• Kitchens • Etc.
Free Estimate - Fully Insured
ALL WORK GUARANTEED! 3/8

ROOFING & SIDING

MARCH & WILSON'S

ROOFING CO.
Discount on all Hot Roofs.
Fully Insured
482-3516 or 824-4551 3/10

CENTURY HOME IMPROVEMENTS

10% SPECIAL
• Roofing • Siding
• Gutters
• Alum. Windows & Doors
EXPERT INSTALLATION
All Work Guaranteed
Free Estimates
Deal Direct With Owner
Call Ed Lawrence
772-7942 797-0612 4/19

J. GONNA TILE

Walls & Floors
at every description
Foyers - Entrances - Dens
Kitchens - Bathrooms
Over 30 Years Experience
759-5449 7/19

COMPLETE BATHROOM

MODERNIZATION
• New Construction
• Alterations
• Repairs
661-5172 7/3

CHILD CARE

NURSERY SCHOOLS

Sandy Lane Nursery School

PRE-SCHOOL DAY CARE
KINDERGARTEN
AGES 2-6
"A CHILD'S WORLD
WHERE PLAYING IS LEARNING"
634 Mill Street
Belleville
751-6380
Days & hours to meet your needs.
Hours: 7:45-5:45
Call or come in to register
School open to visitors
Developmental Programs in
Arts • Music • Skills
"Language" • Social Development
Confidence day care program for working mothers
Nutritionally Balanced Lunch
State Licensed certified school & teachers
DEDICATED TO A PROGRAM OF EARLY CHILDHOOD EDUCATION 3/18

Magic City Nursery School

(In Christ Episcopal Church)
393 WASHINGTON AVE.
BELLEVILLE
7:30 A.M. - 2 P.M.
1/2 DAY DAY CARE TO SUIT
KINDERGARTEN
FULL PRE-SCHOOL PROGRAM
STATE LICENSED TEACHERS
STATE CERTIFIED SCHOOL
NOW ACCEPTING FALL REGISTRATIONS
BRING THIS AD FOR 1/2 PRICE REGISTRATION
FEE FOR MONTH OF JANUARY 79. 6/14

CHILD CARE

NURSERY SCHOOLS

EXPERIENCED MATERNITY

WILL CARE FOR YOUR
CHILDREN IN HER NUTLEY
HOME. ANY AGE.
CALL FOR MORE INFORMATION
667-2219

MATURE PERSON WILL

BABY SIT in her home. Days
or evenings. Call 235-0855.

RELIABLE MATERNITY

Will care for your child in my
home. Have nice large fenced-in
yard for when nice weather
arrives. Call 751-5220 Mon.
thru Sat.

FRANCISCAN SISTERS

OF ST. ELIZABETH NURSERY
174 Franklin Ave., Nutley
Age 2-5 Yrs. Hours 7-5
Playroom, din. rm., rec. rm.
with TV & stereo records. Hot
lunch 11:30-12:30. No. 12:30-
2:30. Snacks 3.
Enroll. 6:30 Mon. or Tues.
even. 235-1170 4/12

BUSINESS SERVICES

PLUMBING & HEATING

14 New Street
Belleville
KEEP YOUR PLUMBING YOUNG
J.G. YOUNG & SONS INC.
PLUMBING & HEATING
Stay Home 2348 & 8900
KITCHEN & BATHROOMS REMODELED
AUTOMATIC FIRE SPRINKLER SYSTEMS
Gas Heat, Hot Water Heaters, Elec. Sewer Cleaning
Residential - Commercial - Industrial
Repairs, Alterations, New Construction 3/8

G.P. RUSSELL CONSTRUCTION

"Complete Plumbing & Heating"
License #2821
• Additions • Bathrooms
• Dormers • Basements
• Kitchens • Etc.
Free Estimate - Fully Insured
ALL WORK GUARANTEED! 3/8

ROOFING & SIDING

MARCH & WILSON'S

ROOFING CO.
Discount on all Hot Roofs.
Fully Insured
482-3516 or 824-4551 3/10

CENTURY HOME IMPROVEMENTS

10% SPECIAL
• Roofing • Siding
• Gutters
• Alum. Windows & Doors
EXPERT INSTALLATION
All Work Guaranteed
Free Estimates
Deal Direct With Owner
Call Ed Lawrence
772-7942 797-0612 4/19

J. GONNA TILE

Walls & Floors
at every description
Foyers - Entrances - Dens
Kitchens - Bathrooms
Over 30 Years Experience
759-5449 7/19

COMPLETE BATHROOM

MODERNIZATION
• New Construction
• Alterations
• Repairs
661-5172 7/3

CHILD CARE

NURSERY SCHOOLS

Sandy Lane Nursery School

PRE-SCHOOL DAY CARE
KINDERGARTEN
AGES 2-6
"A CHILD'S WORLD
WHERE PLAYING IS LEARNING"
634 Mill Street
Belleville
751-6380
Days & hours to meet your needs.
Hours: 7:45-5:45
Call or come in to register
School open to visitors
Developmental Programs in
Arts • Music • Skills
"Language" • Social Development
Confidence day care program for working mothers
Nutritionally Balanced Lunch
State Licensed certified school & teachers
DEDICATED TO A PROGRAM OF EARLY CHILDHOOD EDUCATION 3/18

Magic City Nursery School

(In Christ Episcopal Church)
393 WASHINGTON AVE.
BELLEVILLE
7:30 A.M. - 2 P.M.
1/2 DAY DAY CARE TO SUIT
KINDERGARTEN
FULL PRE-SCHOOL PROGRAM
STATE LICENSED TEACHERS
STATE CERTIFIED SCHOOL
NOW ACCEPTING FALL REGISTRATIONS
BRING THIS AD FOR 1/2 PRICE REGISTRATION
FEE FOR MONTH OF JANUARY 79. 6/14

CHILD CARE

NURSERY SCHOOLS

EXPERIENCED MATERNITY

WILL CARE FOR YOUR
CHILDREN IN HER NUTLEY
HOME. ANY AGE.
CALL FOR MORE INFORMATION
667-2219

MATURE PERSON WILL

BABY SIT in her home. Days
or evenings. Call 235-0855.

RELIABLE MATERNITY

Will care for your child in my
home. Have nice large fenced-in
yard for when nice weather
arrives. Call 751-5220 Mon.
thru Sat.

FRANCISCAN SISTERS

OF ST. ELIZABETH NURSERY
174 Franklin Ave., Nutley
Age 2-5 Yrs. Hours 7-5
Playroom, din. rm., rec. rm.
with TV & stereo records. Hot
lunch 11:30-12:30. No. 12:30-
2:30. Snacks 3.
Enroll. 6:30 Mon. or Tues.
even. 235-1170 4/12

BUSINESS SERVICES

PLUMBING & HEATING

14 New Street
Belleville
KEEP YOUR PLUMBING YOUNG
J.G. YOUNG & SONS INC.
PLUMBING & HEATING
Stay Home 2348 & 8900
KITCHEN & BATHROOMS REMODELED
AUTOMATIC FIRE SPRINKLER SYSTEMS
Gas Heat, Hot Water Heaters, Elec. Sewer Cleaning
Residential - Commercial - Industrial
Repairs, Alterations, New Construction 3/8

G.P. RUSSELL CONSTRUCTION

"Complete Plumbing & Heating"
License #2821
• Additions • Bathrooms
• Dormers • Basements
• Kitchens • Etc.
Free Estimate - Fully Insured
ALL WORK GUARANTEED! 3/8

ROOFING & SIDING

MARCH & WILSON'S

ROOFING CO.
Discount on all Hot Roofs.
Fully Insured
482-3516 or 824-4551 3/10

CENTURY HOME IMPROVEMENTS

10% SPECIAL
• Roofing • Siding
• Gutters
• Alum. Windows & Doors
EXPERT INSTALLATION
All Work Guaranteed
Free Estimates
Deal Direct With Owner
Call Ed Lawrence
772-7942 797-0612 4/19

J. GONNA TILE

Walls & Floors
at every description
Foyers - Entrances - Dens
Kitchens - Bathrooms
Over 30 Years Experience
759-5449 7/19

COMPLETE BATHROOM

MODERNIZATION
• New Construction
• Alterations
• Repairs
661-5172 7/3

FOR SALE

MERCHANDISE

BOOKCASES, DESKS, CHESTS

Ready To Finish
PRESENT STOCK
REDUCED FOR CLEARANCE
Cory's Millwork & Supplies
5 Myrtle (Cor. Centre) Nutley
661-2086 2/1

RUMMAGE & BAKE SALE

Temple B'nai Zion
430 Franklin St. Bloomfield
Monday-Monday-Tuesday
Feb. 4-5 10A.M.-3P.M.
Terrific bargains in clothing
& household items.
Welcome To Browse

SUN DRESSES

ONE SIZE FITS ALL
\$4 EACH
IF INTERESTED
CALL 779-7177 7/19

SOFA AND 2 CHAIRS, DOLBY

BED MATRESS, GOOD
CONDITION. CALL 751-
1080.

HEARING PROBLEM?

HEARING AID CENTER
Littles Pharmacy
547 Franklin Ave.
Complete Hearing Aid Service.
Batteries, Accessories, Repairs.
All Makes.
667-0822 2/8

REMODELING YOUR HOME?

"Everything For The Home Owner"
Our experts always ready to help.
Step & Save

LUMBERBETTER 667-1000

104 E. Centre St., Nutley
We Deliver 3/15

BEDDING

FACTORY

DIRECT TO YOU
ALL NEW MATTRESS & BOX
SPRING. CLOSE-OUT FR \$20
E.A. P.I.E. ALL BRAND
NAMES. CALL FOR PRICE ON
ANY SET.

9 PC BEDRM \$249

8 PC LR \$249
IMMEDIATE DELIVERY
CALL 484-4443
ASK FOR NAT.
CASH OR CREDIT 4/15

WALNUT BEDROOM

Double dresser with modern
mirror, chest, bookcase head-
board. Box spring and brand
new mattress. \$100.
Call 759-6113

SAVE FUEL

FIREWOOD
FOR SALE
667-2751 3/29

SINGER

SEWING MACHINE
\$100
LATE MODEL
ORIGINALLY OVER \$300.
CALL 484-5522 2/1

YOU CAN BE BEAUTIFUL TOO

Have Your Eyes Pierced.
Ages. Infants up.
Several styles to choose from.
Hermes, Stars, Birthstones,
Gold & Silver Balls. \$5.95 &
up earrings included.
METZ JEWELERS
3 Ridge Rd., No. Arlington
998-9639 Hours: 10-5:30 Mon.
Thurs, Wed. & Sat. 10-8 Thurs. &
Fri. 7/28

WILLOW BATTAN

PEEL BAMBOO
WICKERLAND
Furniture - Lamps
Baskets - Accessories
Wide selection of wicker to
fit any purpose, of good
quality, sensibly priced.
Step in and browse
434 Church Street, Montclair
783-4345 3/29

Annexen's

COMPLETE KITCHENS
• Personalized Design
• Custom & Ready-Made
Cabinets
• For Every Style and
Budget
142 MIDLAND AVE.
KEARNY, N.J.
998-6892
Member: American Institute
of Kitchen Dealers
ALSO: Large Selection
Ready-to-Finish Furniture 4/28

DIAMONDS & JEWELRY

BRIGHT AND CASH
HIGHEST PRICES PAID
IMMEDIATE PAYMENT
N.J. DIAMOND CO.
330 Glenwood Ave., Bloomfield
Call 748-0158 6/12

BUYING • FREE

COIN, STAMP, SILVER, GOLD
Scrap, Used Jewelry, Diamonds,
Pocket Watches.
St. Charles 1256, East Rutherford
375-5499
470 Union Ave., Irvington 3/15

BUY-TRADE-SELL

OLD BASEBALL CARDS
1880-1970
BASEBALL YEARBOOKS
& MEMORABILIA
NON-SPORTS CARDS
ELVIS MEMORABILIA
667-5263 or 284-0593 3/29

USED COLOR TV'S

WANTED
"Working Or Not"
Any Size
Call 278-1418
Between 10 - 5 p.m. 3/1

PAPER RECYCLING CENTER

Top Prices Paid For —
• NEWSPAPERS • COMIC BOOKS • MAGAZINES
• CLOTHES • BOOKS • CARDS • COMPUTER PAPER
VISIT OUR
CLEAN MODERN
PLANT
Mon.-Fri.
8 to 4
Saturday 8 to 12
36 CHESTNUT ST. 7/28

FOR SALE

MERCHANDISE

CERAMICS

By "ANNE"
CLASS • Mon. 7-9 p.m.
"Beginners Welcome"
Full Line of Complete
Furnishings For Sale.
GIRING, GREENWARE,
SUPPLIES
31 Columbus Ave., Belleville
751-2862 3/18

WALLTEX,

SANITAS
30% to 70% Savings
In Stock - No Waiting
Harrison, N.J.
483-1020 4/28
Open Sunday 10-3pm

USED DESKS • CHAIRS

REBUILT CABINETS
EDELSTEIN OFFICE
FURNITURE WHSE
946 Market St., Paterson
(Cor. Lakeview Ave. & Rt. 80)
523-6153 3/3

OFFICE MOVING

MUST SELL
OFFICE FURNITURE
1 Secretary desk, 60x30 with
typewriter, walnut top.
2 Secretary desks, 60x30, 1H back
chrome swivel base.
4 Chairs, brown vinyl with
chrome arm & base.
1 Coffee table to match.
72x30 Executive Desk, walnut,
black top.
1 High back executive chair,
chrome swivel base.
2 Stack chairs or 667-5508
284-0388 or 667-5508

PORTRAITS

Done from your favorite photo.
Pastel on Charcoal by
Professional Artist
Reasonable!
Call 667-9485 2/8

ANTIQUE • CERAMICS

PEDESTALS
WALL PLACQUES
STATUES
FURNITURE
& BEDDING
& Many Other Items.
Open, Mon. & Fri. 10-7:30pm
Wed. & Sat. 10-6pm
RUMFORD DIST.
725 Main Ave., Passaic, N.J.
(Corner of Madison Ave.)

IMPORTED

SWISS
WATCHES
Only \$5.75 (and up) for
a free catalog write.
SWISS IMPORT
P.O. Box 221
Caldwell, N.J. 07006 7/28

PETS

FREE TO GOOD HOME
MIXED BREED PUPPIES.
MALE AND FEMALE.
CALL 661-2799

WANTED TO BUY

DIAMONDS & JEWELRY
BRIGHT AND CASH
HIGHEST PRICES PAID
IMMEDIATE PAYMENT
N.J. DIAMOND CO.
330 Glenwood Ave., Bloomfield
Call 748-0158 6/12

BUYING • FREE

COIN, STAMP, SILVER, GOLD
Scrap, Used Jewelry, Diamonds,
Pocket Watches.
St. Charles 1256, East Rutherford
375-5499
470 Union Ave., Irvington 3/15

BUY-TRADE-SELL

OLD BASEBALL CARDS
1880-1970
BASEBALL YEARBOOKS
& MEMORABILIA
NON-SPORTS CARDS
ELVIS MEMORABILIA
667-5263 or 284-0593 3/29

USED COLOR TV'S

WANTED
"Working Or Not"
Any Size
Call 278-1418
Between 10 - 5 p.m. 3/1

PAPER RECYCLING CENTER

Top Prices Paid For —
• NEWSPAPERS • COMIC BOOKS • MAGAZINES
• CLOTHES • BOOKS • CARDS • COMPUTER PAPER
VISIT OUR
CLEAN MODERN
PLANT
Mon.-Fri.
8 to 4
Saturday 8 to 12
36 CHESTNUT ST. 7/28

FOR SALE

WANTED TO BUY

HIGHEST PRICES PAID FOR

• BEDROOMS
• LIVING ROOMS
• DINING ROOM SUITES
• LATE MODEL
REFRIGERATORS
CALL 624-5530
EVES 672-6160 5/24

Wanted for Cash

OLD BOOKS & STAMPS
ORIENTAL RUGS
ANTIQUES
Private Buyer 724-6205 4/28

USED TV'S

BOUGHT
CALL
673-7136 7/3

SPOT CASH!!

For Furniture, Antiques, Bric-A-
Brac, Oriental Rugs, Bronzes,
Hummels, Lead Glass Lamp &
Jewelry. Contents of homes
etc. House Sales Conducted.
Appraisal services available.

THE AUCTION BLOCK

893-0098 7/12

TRAINS

TOYS
TROLLEYS
COMICS
BASEBALL CARDS
"In any condition or amount"
Top Cash \$5 Paid
467-0065 5/24

HELP WANTED

NEED 4 PEOPLE

To help manage a part time business from home. Call

EXECUTIVE WOMEN'S COUNCIL

Mrs. Anthony
661-0498 3/8

MACHINISTS

Steady employment opportunity available for all kinds of machinists on the day shift. Must have abilities to work in Maintenance shop, fabricating parts & tools for manufacturing equipment. Top wages, full benefits, convenient location. Apply.

PEERLESS TUBE CO.

58 Locust Ave.
Bloomfield, N.J.
An Equal Opportunity Employer

PART TIME

Work in Bloomfield office. Morning, afternoon or evening. Excellent salary. No typing, or stereo needed. College and high school students accepted. Call Mr. Sloan 429-7580

P/T Evenings

\$4. per hour
TELEPHONE SOLICITORS
991-7373 or 991-7337

PART TIME/FULL TIME

EARN \$30 IN TWO HOURS
SHOWING BEAUTIFUL CANDLELIGHT HOMES. CAR NECESSARY.
CALL 429-8455

PART TIME HELP IN PIZZERIA

11AM-4PM.
Work on people.
Make sandwiches.
CALL 233-1130

PRIMARY NURSING

at SAINT MICHAEL'S MEDICAL CENTER
NEWARK, NEW JERSEY
Full and part time positions available for R.N.'s in this progressive teaching institution.

Excellent benefit package includes:

- 37 1/2 hr. work week
- 12 paid holidays
- 4 weeks vacation
- uniform allowance
- fully paid Blue Cross/Blue Shield/Major Medical
- Life Insurance
- Dental Plan
- Pension Plan
- Ongoing Inservice with C.E.U.'s
- Individualized Orientation

Competitive Salary

Openings available on 3-11 & 11-7 for surgery, medicine, oncology, hemodialysis, neurology, infectious diseases, respiratory, pediatrics, ICU & OB.

Contact Mr. Bennett at 377-3455

After hours at 429-3000
An Equal Opportunity Employer

PRODUCTION CONTROL CLERK NEEDED!

With 2-3 years experience. IPICS knowledge a plus.

Contact N. WALKER

759-4020

REAL ESTATE SALES

Opening for full time salesperson. Congenial office. Leads furnished, excellent commission split plus bonus plan. For more information call

SUBURBAN REALTY & INSURANCE CO., INC.

37-39 Broad St. in Bloomfield center 748-0900

REAL ESTATE SALES

Busy, Need Help! Bloomfield, Nutley, Glen Ridge, Belleville, Member 4 boards, Corporate Referrals. Solid realtor. Top training. Daily advertisers. Make money the pleasant way. Contact: 231

ED SAVACOLLO

654-4747 or 233-4968

RECEPTIONIST

For medical office in Nutley. Duties include: handling phone calls, visitors, heavy typing, assisting bookkeeper with clerical work. Attractive benefits. Salary commensurate with experience.

Call 667-1221

-Bet. 8:30A.M.-5P.M.

TURCHETTE AUTO AGENCY

675 Franklin Ave.
Nutley, N.J.

HELP WANTED

SALES PERSON

REAL ESTATE

\$25-300.00. POTENTIAL FOR AGGRESSIVE PERSON. CALL AND ASK ABOUT OUR INCENTIVE PROGRAM.

SUBURBAN ESSEX REALTY

667-3500 OR 233-1602

SECRETARIES

Bilion Dollar First National State Bank of New Jersey has immediate openings for Experienced Secretaries

PIANO & ORGAN LESSONS

In your home. By qualified experienced music teacher. Call 759-3665

PIANO & ORGAN LESSONS

In your home. By qualified experienced music teacher. Call 759-3665

PIANO & ORGAN LESSONS

In your home. By qualified experienced music teacher. Call 759-3665

PIANO & ORGAN LESSONS

In your home. By qualified experienced music teacher. Call 759-3665

PIANO & ORGAN LESSONS

In your home. By qualified experienced music teacher. Call 759-3665

PIANO & ORGAN LESSONS

In your home. By qualified experienced music teacher. Call 759-3665

PIANO & ORGAN LESSONS

In your home. By qualified experienced music teacher. Call 759-3665

PIANO & ORGAN LESSONS

In your home. By qualified experienced music teacher. Call 759-3665

PIANO & ORGAN LESSONS

In your home. By qualified experienced music teacher. Call 759-3665

PIANO & ORGAN LESSONS

In your home. By qualified experienced music teacher. Call 759-3665

PIANO & ORGAN LESSONS

In your home. By qualified experienced music teacher. Call 759-3665

PIANO & ORGAN LESSONS

In your home. By qualified experienced music teacher. Call 759-3665

PIANO & ORGAN LESSONS

In your home. By qualified experienced music teacher. Call 759-3665

PIANO & ORGAN LESSONS

In your home. By qualified experienced music teacher. Call 759-3665

PIANO & ORGAN LESSONS

In your home. By qualified experienced music teacher. Call 759-3665

PIANO & ORGAN LESSONS

In your home. By qualified experienced music teacher. Call 759-3665

PIANO & ORGAN LESSONS

In your home. By qualified experienced music teacher. Call 759-3665

PIANO & ORGAN LESSONS

In your home. By qualified experienced music teacher. Call 759-3665

PIANO & ORGAN LESSONS

In your home. By qualified experienced music teacher. Call 759-3665

PIANO & ORGAN LESSONS

In your home. By qualified experienced music teacher. Call 759-3665

PIANO & ORGAN LESSONS

In your home. By qualified experienced music teacher. Call 759-3665

PIANO & ORGAN LESSONS

In your home. By qualified experienced music teacher. Call 759-3665

PIANO & ORGAN LESSONS

In your home. By qualified experienced music teacher. Call 759-3665

PIANO & ORGAN LESSONS

In your home. By qualified experienced music teacher. Call 759-3665

PIANO & ORGAN LESSONS

In your home. By qualified experienced music teacher. Call 759-3665

PIANO & ORGAN LESSONS

In your home. By qualified experienced music teacher. Call 759-3665

PIANO & ORGAN LESSONS

In your home. By qualified experienced music teacher. Call 759-3665

HELP WANTED

WAREHOUSE PERSON

OR ORDER PICKERS

For leading wholesaler. In-charge area. Must be reliable. 5 Day week. Steady work. See Mr. Sloan at 300 Nye Ave., Irvington, N.J.

WAREHOUSE/SHIPPING PERSON

Needed for one man warehouse in Nutley. Many advantages & benefits. Division of major U.S. company. Call 667-1600

INSTRUCTIONS

PIANO & ORGAN LESSONS

LaRocco, 70; Pine Bar owner

obituaries

Joseph Calabrese, 53; war veteran, technician

A Mass was offered at Sacred Heart Church, Bloomfield, Jan. 27 for William La Rocco, 70, who died Jan. 23 at Community Hospital, Montclair.

Born in Italy, Mr. La Rocco lived in Newark before moving to Bloomfield 15 years ago. He was the owner of the Pine Bar, Belleville, 10 years.

Robert Nugent; school worker

A Mass was offered at St. Mary's Church Jan. 20 for Robert Nugent, 69, who died Jan. 18 at home.

Mr. Nugent lived in Nutley most of his life. Before his retirement, he was a maintenance worker for the Nutley Board of Education.

Surviving are his wife, Agnes; two daughters, Mrs. Karen Giabanis of New Brunswick and Mrs. Diane Prudenti of Nutley; a son, Robert J. of Phillipsburg; a brother, Arthur of Belleville, and six grandchildren.

Arrangements were made by the S.W. Brown and Son Funeral Home. Interment was in Gate of Heaven Cemetery, East Hanover.

Mariano Rusignuolo

A Mass was offered at Sacred Heart Church Jan. 24 for Mariano Rusignuolo, 89, who died Jan. 20 at Mountsinde Hospital, Glen Ridge.

Born in Italy, Mr. Rusignuolo lived in Newark before moving to Bloomfield 33 years ago. He was the owner of Rusignuolo's Bakery from 1922 to 1946.

Mr. Rusignuolo was a World War II Army veteran.

Surviving are a daughter, Mrs. Jennie Scaduto of Bloomfield; a son, Charles of Belleville; four grandchildren and one great-grandchild.

Arrangements were made by the La Monica Funeral Home, Bloomfield. Interment was in Immaculate Conception Cemetery, Montclair.

Anthony Fabiano

A Mass was offered at St. Anthony's Church Jan. 18 for Anthony Fabiano, 68, who died Jan. 14 at Clara Maass Memorial Hospital.

Born in Newark, Mr. Fabiano lived in Belleville many years. He was a retired salesman for Mary Carter Paints, Springfield, 10 years.

Mr. Fabiano was a World War II Army veteran.

Surviving are his wife, Ida; a daughter, Gail of Belleville; two sons, Philip and Gary; a brother, Frank; six sisters, Mary, Louise, Angela, Helen, Felice and Pat, and three grandchildren.

Tax credits are available for 'eligible individuals'

If you qualify, you may be eligible to take a credit against your income tax liability based on your earned income, according to H&R Block.

Earned income includes wages, salaries and other employee compensation, plus earnings from self-employment. The credit is based on 10 percent of the first \$4,000 of your earned income giving a maximum credit of \$400. This credit must be reduced by 10 percent of any adjusted gross income (or earned income if greater) above \$4,000.

Irvine Cozzarelli

MEMORIAL HOME

James J. Cozzarelli, Jr.
Owner-Manager

Serving Every Religion

276 Washington Ave.
Belleville, N.J.
759-1114

GEORGE F. KIERNAN
PATRICK J. KIERNAN

KIERNAN FUNERAL HOME

(Non-Sectarian)

101 UNION AVENUE
BELLEVILLE, N.J.

759-3503

A Mass was offered at St. Mary's Church Jan. 22 for Joseph Calabrese, 53, who died Jan. 17 at Clara Maass Memorial Hospital.

Born in Newark, Mr. Calabrese lived in Belleville 21 years. He was a technician for Bergen Generating Station, Public Service and Electric, Richfield Park 30 years.

Mr. Calabrese was a World War II Navy veteran and member of

Local 1330 International Brotherhood of Electrical Workers.

Surviving are his wife, Josephine; two daughters, Maria and Ann; two sons, Anthony and Michael, and two sisters, Mrs. Louise Masi and Mrs. Margaret Siniscal.

Arrangements were made by the Spatola Funeral Home, Newark. Interment was in Glendale Cemetery, Bloomfield.

CORNER DELI

Jug Milk \$1⁶⁶ gal.

Domestic Lean Boiled Ham \$2³⁹ lb.

American White or Yellow Cheese \$1⁶⁹ lb.

Liverwurst \$1⁴⁹ lb.

C&C Cola 79¢ ½ gal.

Turkey Breast \$2⁶⁹ lb.

(prices pertain to any part of a pound)

Catering - ITALIAN SPECIALTIES

Home Made Italian Stuffed Peppers
Hot Meatball Sandwiches

Fresh Buns Every Sunday
STOP IN
Have a free cup of coffee

660 Union Ave 759-9797 Belleville, N.J.

GOOD SUN., JAN. 28 THRU SAT., FEB. 3, 1979.

Two Guys

SUPER SUPERMARKET

FRYING CHICKEN

WHOLE

GOV'T. INSPECTED!

49¢

lb.

BUY NOW AND SAVE!

PERDUE - THIGH ON ROASTER LEGS

FOR BAKING, ROASTING OR FRICASSÉE

79¢

lb.

Thighs 89¢
Drumsticks 99¢

CUT FROM CORN FED PORKERS!

CUSTOM CUT

9-11 ENDS & CENTERS

Whole Pork Loin 1⁶⁹ lb.

Pork Chops 1⁶⁹ lb.

FRESH PICNIC SHOULDER

Roasting Pork 1¹⁵ lb.

COUNTRY STYLE

Spare Ribs 1⁶⁹ lb.

GOV'T. INSPECTED ROASTING CHICKEN

3 ½ lb. AVG.

59¢

lb.

Two Guys clip & save

WITH THIS COUPON AND A \$7.50 OR MORE FOOD PURCHASE YOU PAY

59¢

4-PK., COTTONELLE

BATHROOM TISSUE

ONE 4-PK. PER COUPON

One coupon per customer. Good thru Sat., Feb. 3, 1979.

Two Guys clip & save

WITH THIS COUPON AND A \$7.50 OR MORE FOOD PURCHASE YOU PAY

69¢

U.S. NO. 1 - 10 lb. BAG

POTATOES

ONE BAG PER COUPON

One coupon per customer. Good thru Sat., Feb. 3, 1979.

Two Guys clip & save

WITH THIS COUPON AND A \$7.50 OR MORE FOOD PURCHASE YOU PAY

9¢

6-PK., 5-OZ. PKG.

FRESH PICT WAFFLES

ONE PKG. PER COUPON

One coupon per customer. Good thru Sat., Feb. 3, 1979.

DAIRY DEPT.

TROPICANA

ORANGE JUICE

SAVE 40¢

99¢

1/2 GAL. CTN.

ALL FLAVORS

BREYER'S YOGURT

SAVE 34¢

3 \$1

8-OZ.

APPETIZING DEPT.

STORE COOKED VIRGINIA HAM OR

SMOKED HAM

1/2 lb.

69¢

STARFIELD - WHITE OR YELLOW

AMERICAN CHEESE

1/2 lb.

95¢

FROZEN FOODS

CHICKEN - BEEF - TURKEY

BANQUET POT PIES

SAVE 48¢

4 \$1

BAKERY DEPT.

TWO GUYS ROUND OR SQUARE

WHITE BREAD

NO PRESERVATIVES

3 \$1

22-OZ.

ICE CREAM DEPT.

BORDEN'S-ALL FLAVORS

ICE CREAM

SAVE 60¢

129

1/2 GAL. SQUARE

BIRDSEYE

ORANGE PLUS

SAVE 26¢

79¢

12-OZ. CAN

Two Guys FOOD COUPON

WITH THIS COUPON

129

FAB DETERGENT

49-OZ. BOX

One coupon per customer. Good thru Sat., Feb. 3, 1979.

BUY NOW!

MIRACLE WHIP

32-OZ. JAR

1⁰⁹

RAGU - ALL FLAVORS

SPAGHETTI SAUCE

48-OZ. JAR

1⁴⁹

RONZONI

NO. 17 LINGUINE

NO. 2 ZITI OR NO. 10 VERMICELLI

1-lb. BOX

39¢

BUY NOW!

FOLGER'S COFFEE

1-lb. CAN

1⁹⁹

Two Guys FOOD COUPON

WITH THIS COUPON

79¢

PALMOLIVE DISH DETERGENT

22-OZ. BTL.

One coupon per customer. Good thru Sat., Feb. 3, 1979.

CAMPBELL'S

TOMATO SOUP

10 1/2-OZ. CANS

5 89¢

REG. OR DIET

C&C COLA

4-PK. 12-OZ. CANS

89¢

MOTT'S

APPLE SAUCE

35-OZ. JAR

69¢

KRAFT

GRAPE JELLY

32-OZ. JAR

89¢

FRESH PRODUCE!

CALIFORNIA NAVEL ORANGES

10 99¢

FOR

FLORIDA

Juice Oranges 12 \$1

FRESH & CRISP

Cabbage

19¢ lb.

Two Guys FOOD DEPARTMENT

KEARNY

175 Passaic Avenue

Open Daily 8:00 A.M. to 9:30 P.M. Sunday 8:00 A.M. to 5:00 P.M.

We reserve the right to limit quantities. Not responsible for typographical errors. Price effective thru Sat., Feb. 3, 1979.

**PRIDE OF THE FARM
CUT GREEN BEANS**

4 15 1/2-oz. cans **99¢**



**VEGETARIAN BEANS OR
HEINZ PORK & BEANS**

4 1-lb. cans **99¢**



**SHOPRITE VAC PACK
12-OZ. CREAM STYLE OR
WHOLE KERNEL CORN**

4 1-lb. cans **99¢**



**LIBBY'S
TOMATO JUICE**

4 1-qt. 14 oz. can **49¢**



**MICHIGAN MAID OR
THANK YOU PURPLE PLUMS**

3 1-lb. 14 oz. can **39¢**



**CHICKEN OF THE SEA IN OIL OR WATER
SOLID PACK WHITE TUNA**

8 7-oz. can **89¢**





ShopRite's ... 9th Annual

Can Can Sale!

ShopRite GRAPEFRUIT JUICE **49¢**
1-qt. 14 oz. can

FARM FLAVOR SPINACH **3 15-oz. cans \$1**

MIRACLE WHIP SALAD DRESSING **\$1.59**
1-qt. 1 pt. jar

Dog Food **4 14 1/2-oz. cans 99¢**

Hawaiian Punch **2 46-oz. cans 89¢**

Corn **4 1-lb. cans 99¢**

Bi Packs **2 1-lb. 10 oz. cans \$1.19**

Sliced Carrots **4 1-lb. cans 99¢**

Plum Tomatoes **ITALIAN DEL GAIZO 35-oz. can 79¢**

Beans **PROGRESSO-RED KIDNEY, CANNELLINI OR CHICK PEAS 2 1-lb. 4 oz. cans 89¢**

Broil-A-Foil **59¢**

Era Liquid **HEAVY DUTY LAUNDRY DETERGENT 1/2 gal. 2.59**

Dog Food **TOP CHOICE COUNTRY STYLE 72-oz. can \$2.39**

SLICED YELLOW CLING IN LIGHT SYRUP VAL VITA PEACHES **49¢**
1-lb. 13 oz. can

COLLEGE INN CHICKEN BROTH **4 13-oz. cans 99¢**

ALL VARIETIES SCOTT TOWELS **59¢**
pkg of 110 sheets

The Dairy Place

REGULAR QUARTERS (SALT) FLEISCHMANN'S MARGARINE **79¢**
1-lb. pkg.

Breyers Yogurt **3 8-oz. cups \$1**

Singles **ShopRite AMERICAN NO. WRAPPED 12-oz. \$1.19**

Large Eggs **USDA GRADE "A" WHITE ShopRite dozen 99¢**

Soft Margarine **2 1-lb. pkgs. 99¢**

Cottage Cheese **BREAKSTONE 1-lb. cup 79¢**

Sour Cream **SEALTEST pint 79¢**

Plain Yogurt **ShopRite pint 49¢**

The MEATING Place

ANY SIZE PACKAGE BEEF GROUND CHUCK **\$1.67**
lb.

BONELESS CHUCK POT ROAST **\$1.67**
lb.

BEEF LOIN WITH TENDERLOIN SIRLOIN STEAK **\$1.87**
lb.

WHOLE OR HALF BEEF LOIN (UNTRIMMED) CUSTOM CUT FOR STEAKS OR ROAST 18 TO 22 LBS. AVG. SHELLS OF BEEF **\$1.77**

Boneless Sirloin **STEAK BEEF LOIN lb. \$2.27**

Cube Steak **BEEF CHUCK CUT lb. \$1.77**

Shell Steak **BEEF LOIN WITH TAIL lb. \$2.97**

Fresh Turkeys **YOUNG GRADE "A" 12 TO 14 LBS. AVG. lb. 79¢**

Chicken Legs **WHOLE WITH THIGHS lb. 77¢**

Corned Beef Brisket **WHOLE lb. \$1.27**

Veal Steaks **BREADED FROZEN lb. \$1.29**

Veal Steaks **PLAIN FROZEN lb. \$1.49**

T-Bone Steak **BEEF LOIN lb. \$2.47**

Porterhouse **STEAK BEEF LOIN WITH TENDERLOIN lb. \$2.47**

Beef for Stew **BONELESS CHUCK CUT lb. \$1.89**

Corned Beef **BREKST DELI DELIGHT THIN CUT CONSUMER SIZE lb. \$1.79**

Corned Beef **BREKST DELI DELIGHT THICK CUT CONSUMER SIZE lb. \$1.39**

Pork Butts **SMOKED SHOPRITE WATER ADDED lb. \$1.89**

Slab Bacon **BY THE PIECE lb. \$1.19**

Beef Liver **FROZEN SKINNED AND VEINED lb. 79¢**

GOVERNMENT GRADE "A" CHICKEN MIXED FRYER PARTS **55¢**
3 Great Quarters with wings and backs
3 Leg Quarters with backs attached
3 Giblet Packets

NEW ZEALAND GENUINE FROZEN SPRING LAMB

OVEN READY LEGS OF LAMB **\$1.49**
1-lb. 10 oz. can

Shanks Of Lamb **99¢**

The Frozen Food Place

MORTON "FULLY COOKED" 2-LB. FRIED CHICKEN **\$1.99**
2-lb. pkg.

Orange Juice **TROPICANA 12-oz. can 79¢**

Man Pleasers **11-oz. 99¢**

Pot Pies **ORCHARD HILL CHICKEN TURKEY OR BEEF 4-oz. 99¢**

The Appy Place

STORE SLICED (WATER ADDED) DOMESTIC COOKED HAM **\$1.29**
1/2-lb.

Swiss Cheese **FINLAND IMPORTED STORE SLICED 1/2-lb. \$1.29**

Liverwurst **ARMOUR STORE SLICED lb. 99¢**

The Deli Place

REGULAR OR THICK ShopRite BACON **\$1.39**
1-lb. pkg.

Beef Franks **COLONIAL 1-lb. pkg. 99¢**

Chicken Franks **ShopRite 1-lb. pkg. 89¢**

The Ice Cream Place

ASSORTED FLAVORS BREYERS ICE CREAM **\$1.69**
1/2-gal. cont.

Dixie Cups **ShopRite ICE CREAM 12 1/2 \$1.29**

Health & Beauty Aids

WHY PAY MORE? CONTACT CAPSULES **99¢**
1/2 oz. 10

Bayer Aspirin **box of 300 \$2.39**

Shampoo **FABERGE WHEAT GERM OIL & HONEY ORGANIC 15-oz. 1.19**

The Fish Market

FRESH * FILLET OF FLOUNDER **\$2.59**
lb.

*** Red Snapper** **PACIFIC FRESH FILLET \$2.59**

Fresh Bake Shoppe

FRESH BAKED HARD ROLLS **99¢**
dozen

The Produce Place

U.S. No. 1 GRADE MAINE POTATOES **69¢**
10-lb. bag

Fresh Broccoli **CALIFORNIA "14 SIZE" bunch 59¢**

Potatoes **IDAH0 BAKING U.S. No. 1 GRADE 5-lb. bag 79¢**

Cherry Tomatoes **RED 1-lb. 49¢**

Crisp Celery Hearts **59¢**

Cucumbers **EXTRA FANCY 6 for \$1**

Eggplants **ROYAL PURPLE 3 for \$1**

Oranges **TEMPLE SWEET JUICY "100 SIZE 10.99¢**

Radishes **4 1/2 oz. 448 oz. 2.39¢**

Apples **RED GOLDEN DELICIOUS 11-1/2 lb. 4.49¢**

Anjou Pears **LARGE 4.49¢**

General Merchandise

FLORAL EXPRESSIONS HEARTHSIDE STONEWARE

WEEK NO. 10 SALAD PLATE **59¢**
ea.

ShopRite Coupon

3 1/2-oz. packages any variety Royal **INSTANT PUDDING** **4 for 89¢**
WITH THIS COUPON

ShopRite Coupon

One (1) 10-oz. jar instant **SAVARIN COFFEE** **\$2.99**
WITH THIS COUPON

ShopRite Coupon

One (1) 6 1/2-oz. can ShopRite in oil or water **CHUNK LIGHT TUNA** **39¢**
WITH THIS COUPON

VALUABLE COUPON

20¢ OFF

Towards the purchase of six (6) 4 1/2-oz. jars any variety except meat **HEINZ STRAINED BABY FOOD**